

RE-BID DOCUMENTS

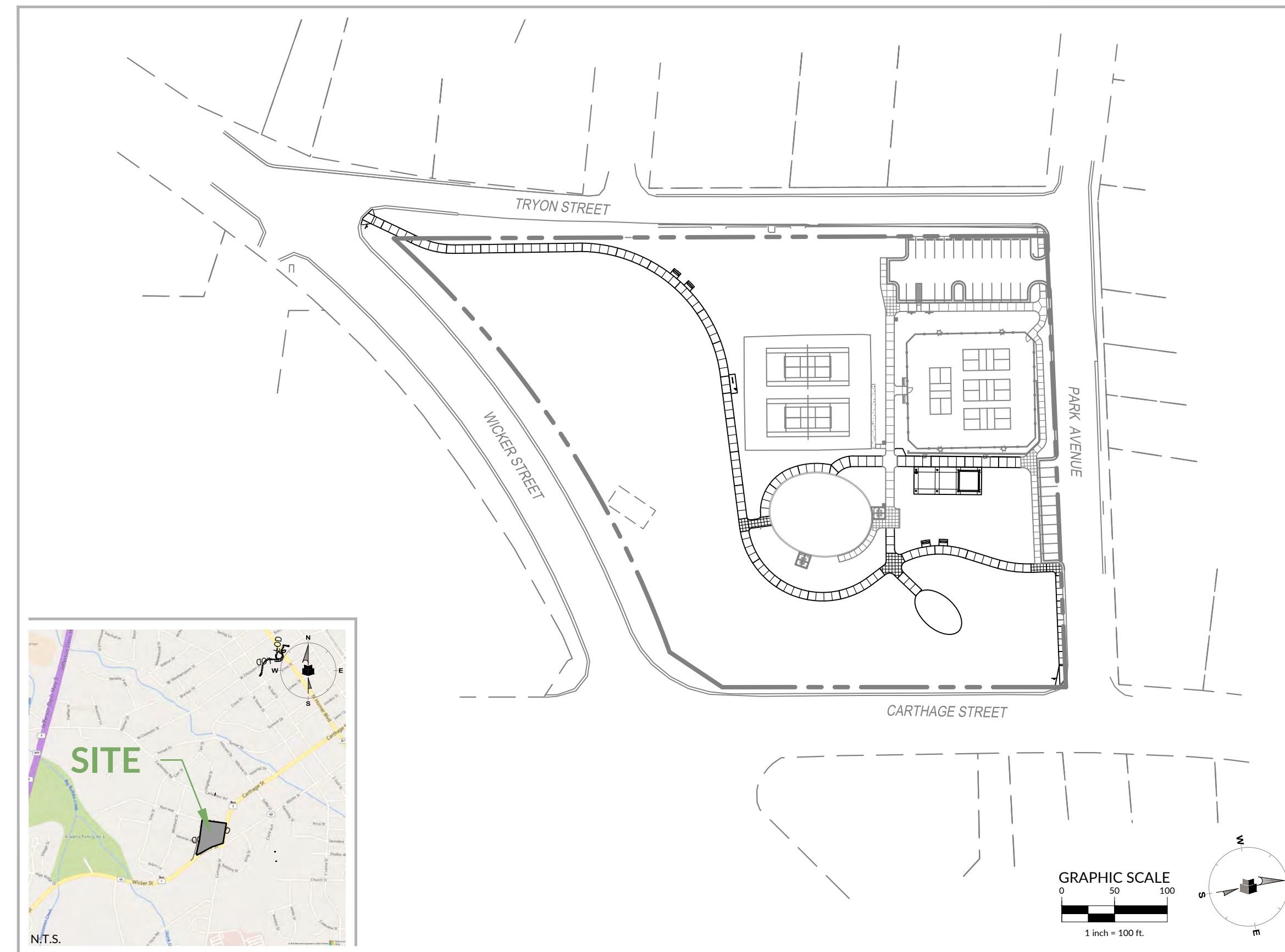
KIWANIS CHILDREN'S PARK

PHASE II

101 PARK AVENUE | SANFORD, NC | LEE COUNTY
 FEBRUARY 26, 2024

SITE DATA TABLE

| | |
|----------------------------|--------------------|
| LEE COUNTY PROJECT NO. | |
| PARCEL PIN NO. | 9642-37-8797-00 |
| TOTAL PROJECT AREA (ACRES) | 4.74 ACRES |
| EXISTING ZONING & LAND USE | R-12 / PUBLIC PARK |
| PROPOSED USE | PUBLIC PARK |
| SETBACKS: | |
| FRONT | 30 |
| SIDE | 12 |
| REAR | 20 |



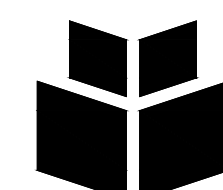
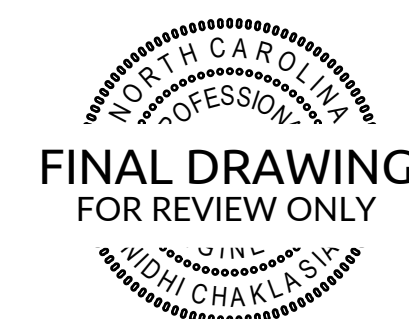
INDEX OF SHEETS

| Number | Title |
|--------|---------------------------------------|
| L0.00 | COVER SHEET |
| L0.01 | GENERAL NOTES |
| L0.02 | GENERAL NOTES |
| L1.01 | EXISTING CONDITIONS & DEMOLITION PLAN |
| L2.01 | SITE PLAN |
| L3.01 | UTILITY PLAN |
| L4.01 | GRADING & EROSION CONTROL PLAN |
| L4.02 | EROSION CONTROL DETAILS |
| L5.01 | LAYOUT PLAN |
| L5.02 | LAYOUT PLAN ENLARGEMENT |
| L6.01 | SITE DETAILS |
| L6.02 | SITE DETAILS |
| L6.03 | SITE DETAILS |

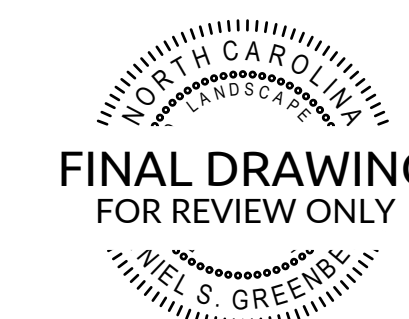
CONTACT LIST:

LANDSCAPE ARCHITECT
 DAN GREENBERG
 WithersRavenel
 137 S Wilmington Street, Suite 200
 Raleigh, NC 27601
 919-535-5200
 dgreenberg@withersravenel.com

PARKS DIRECTOR
 JOSEPH KEEL
 LEE COUNTY
 2303 TRAMWAY ROAD
 SANFORD, NC 27332
 919-775-2107
 jkeel@leecountync.gov



WithersRavenel
 137 S Wilmington Street | Suite 200 | Raleigh, NC 27601
 License #: F-1479 | t: 919.469.3340 | www.withersravenel.com



LEE COUNTY
 2303 TRAMWAY ROAD
 SANFORD, NC 27332
 PHONE #: 919-775-2107
 ATTENTION: JOSEPH KEEL

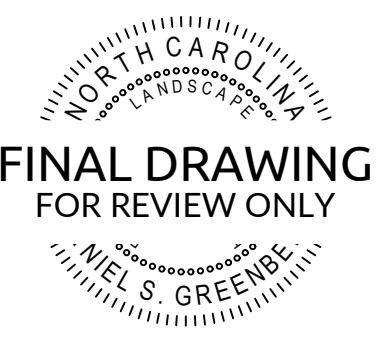


RE-BID DOCUMENTS
 KIWANIS CHILDREN'S PARK
 PHASE II
 WR PROJECT NO.09220249.00
 SANFORD:
 MUNI PRO NO.:(Muni Proj. No.)
 01/08/2024

U:\2024\02\02\2024\Kiwani's Park Phase II\CAD\Drawing Set\Construction\0303 General Notes.dwg, Wednesday, February 21, 2024, 4:48:31 PM, 1:880xOP

ARE BROUGHT TO FINAL GRADE. MAINTAIN DIVERSIONS, INLET PROTECTION, AND SEDIMENT BASINS UNTIL SITE IS COMPLETELY STABILIZED.

- 11. REMOVE STOCKPILES AND MATERIALS AND DECOMMISSION STAGING AND LAYDOWN AREAS.
- 12. SEED, FERTILIZE, AND MULCH ALL DISTURBED AREAS, INCLUDING ALL STORAGE, STAGING, AND OFF-SITE STAGING, IN ACCORDANCE WITH THE REQUIREMENTS SET FORTH ON THE PLANS.
- 13. ONCE THE DISTURBED AREAS ARE STABILIZED, THE CONTRACTOR SHALL NOTIFY THE INSPECTOR FROM NCDEQ.
- 14. UPON APPROVAL FROM THE NCDEQ INSPECTOR AND THE ENGINEER, REMOVE TEMPORARY EROSION CONTROL MEASURES (I.E. ROCK CONSTRUCTION ENTRANCE, FILTER FABRIC FENCE, TREE PROTECTIONS FENCING, CONCRETE WASH PIT, TEMPORARY FIBER CHECK DAMS, TEMPORARY EROSION CONTROL BASIN, ETC.).
- 15. UPON REMOVAL OF TEMPORARY EROSION CONTROL MEASURES, RE-GRADE DISTURBED AREAS IN ACCORDANCE WITH FINAL GRADING PLAN AND STABILIZE ANY EXPOSED BARE EARTH.



FINAL DRAWING FOR REVIEW ONLY

INITIAL PLAN DATE: 01/08/2024
REVISIONS:
1 02/26/2024 ----
RE-BID

| | |
|--------------|-----------------|
| WR Job No. | DATE |
| 092220249.00 | 01/08/2024 |
| DRN: WR | DGN: WR CKD: WR |

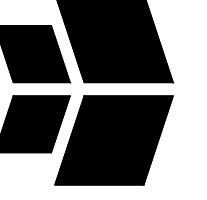
GENERAL NOTES

L0.02

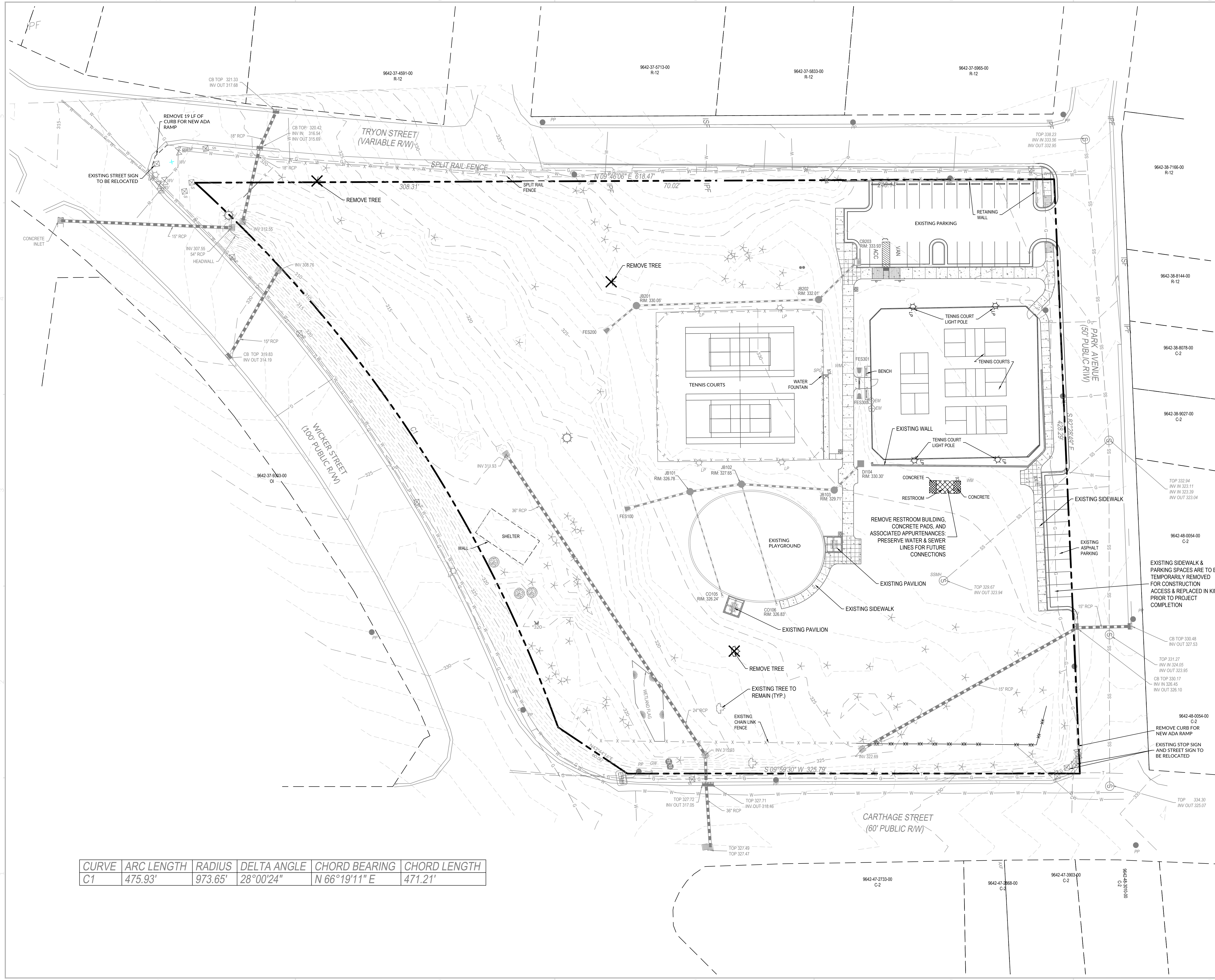
RE-BID DOCUMENTS
**KIWANIS CHILDREN'S PARK
PHASE II**

101 PARK AVENUE | SANFORD, NC | LEE COUNTY

LEE COUNTY
2303 TRAMWAY ROAD
SANFORD, NC 27332



WithersRavenel
137 S Wilmington Street | Suite 200 | Raleigh, NC 27601
License #: F-1479 | T: 919.469.3340 | www.withersravenel.com



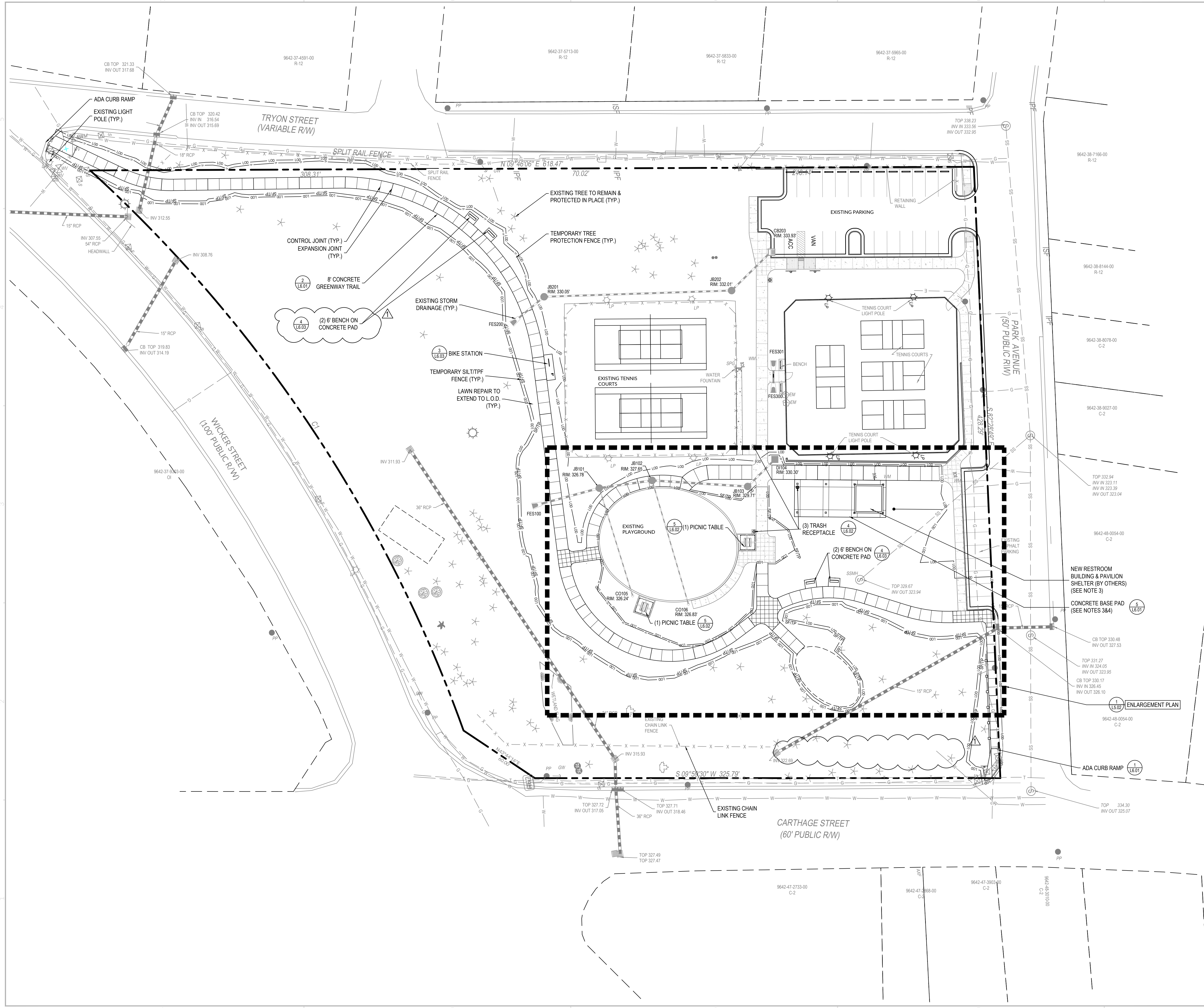
- LEGEND**
- SIGN
 - CATCH BASIN
 - YARD INLET
 - WATER VALVE
 - SPIGOT
 - WATER METER
 - SANITARY SEWER MANHOLE
 - SEWER CLEANOUT
 - EXISTING FENCE
 - FIRE HYDRANT
 - UTILITY POLE
 - LIGHT POLE
 - GUY WIRE
 - TELEPHONE HANDHOLE
 - ELECTRIC METER
 - REMOVE STRUCTURE
 - REMOVE PAVING
 - REMOVE TREE

| CURVE | ARC LENGTH | RADIUS | DELTA ANGLE | CHORD BEARING | CHORD LENGTH |
|-------|------------|---------|-------------|---------------|--------------|
| C1 | 475.93' | 973.65' | 28°00'24" | N 66°19'11" E | 471.21' |

U:\22\0540\220540\Kiwanis Children's Park Phase II\CAD\Drawing\448\Conditions & Demolition Plan.dwg, Wednesday, February 21, 2024 4:08:58 PM, H:\B3\CP

EST. 1993

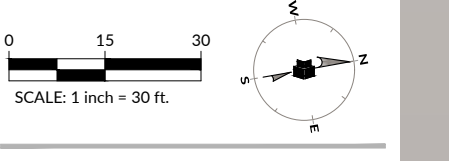
our people • your success



- NOTES:**
1. NEW RESTROOM BUILDING AND PAVILION SHELTER ARE TO BE PROVIDED BY OTHERS AND CONSTRUCTED AS PART OF THIS PROJECT. THESE PLANS SHOW A BUILDING FOOTPRINT AS PROVIDED BY THE MANUFACTURER (RESTROOM DOORS ARE TO OPEN INTO THE COVERED PAVILION AREA). CONTRACTOR SHALL INSTALL CONCRETE BASE PAD, FULLY COORDINATING WITH RESTROOM INSTALLER, WHO WILL PROVIDE PAVILION POST FOOTINGS AND UTILITY STUBS. CONCRETE PAD SCORE JOINTS ARE TO ALIGN WITH POST FOOTING EXPANSION JOINTS.

RE-BID DOCUMENTS
**KIWANIS CHILDREN'S PARK
 PHASE II**
 101 PARK AVENUE | SANFORD, NC | LEE COUNTY

**FINAL DRAWING
 FOR REVIEW ONLY**
 NIEL S. GREENBERG



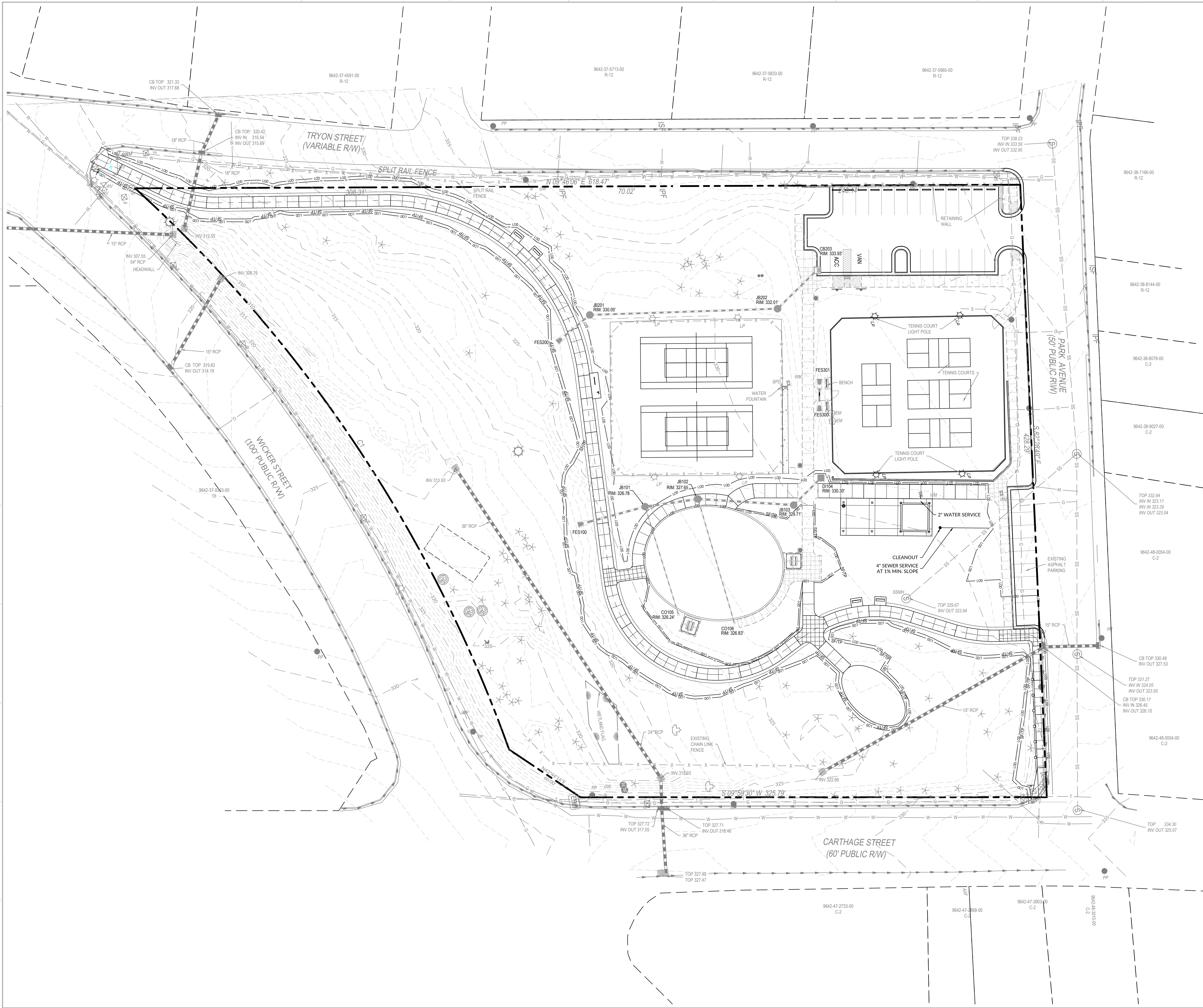
INITIAL PLAN DATE: 01/08/2024
 REVISIONS:
 1.02/26/2024 ----
 RE-BID

| | |
|-------------|------------|
| WR Job No. | DATE |
| 09220249.00 | 01/08/2024 |
| DRN: WR | DGN: WR |
| | CKD: WR |

SITE PLAN

L2.01

U:\22\0440\22044\Kiwanis Children's Park Phase II\CAD\Drawing\Site\Drawings\1220_Site Plan.dwg Friday, February 23, 2024 2:52:23 PM - 11/01/2024



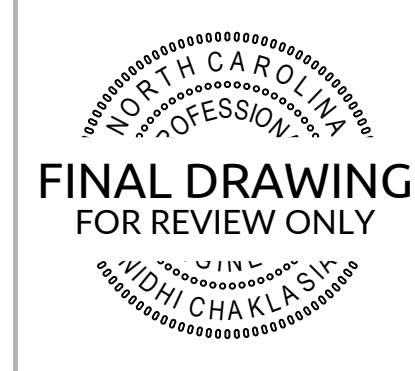
NOTES:
 1. CONTRACTOR SHALL STUB OUT WATER, SEWER, AND ELECTRICAL UTILITIES 5' FROM THE BUILDING PAD. CONTRACTOR SHALL COORDINATE UTILITY LOCATIONS WITH SHELTER MANUFACTURER PRIOR TO INSTALLATION.



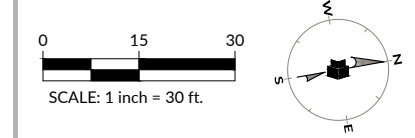
WithersRavenel
 137 S. Wilmington Street | Suite 200 | Raleigh, NC 27601
 License #: F-1479 | T-919-469-3340 | www.withersravenel.com

LEE COUNTY
 2303 TRANWAY ROAD
 SANFORD, NC 27332

RE-BID DOCUMENTS
**KIWANIS CHILDREN'S PARK
 PHASE II**
 101 PARK AVENUE | SANFORD, NC | LEE COUNTY



**FINAL DRAWING
 FOR REVIEW ONLY**



INITIAL PLAN DATE: 01/08/2024
 REVISIONS:
 1. 02/26/2024 ----
 RE-BID

WR Job No. DATE
 09220249.00 01/08/2024
 DRN: WR DGN: WR CKD: WR

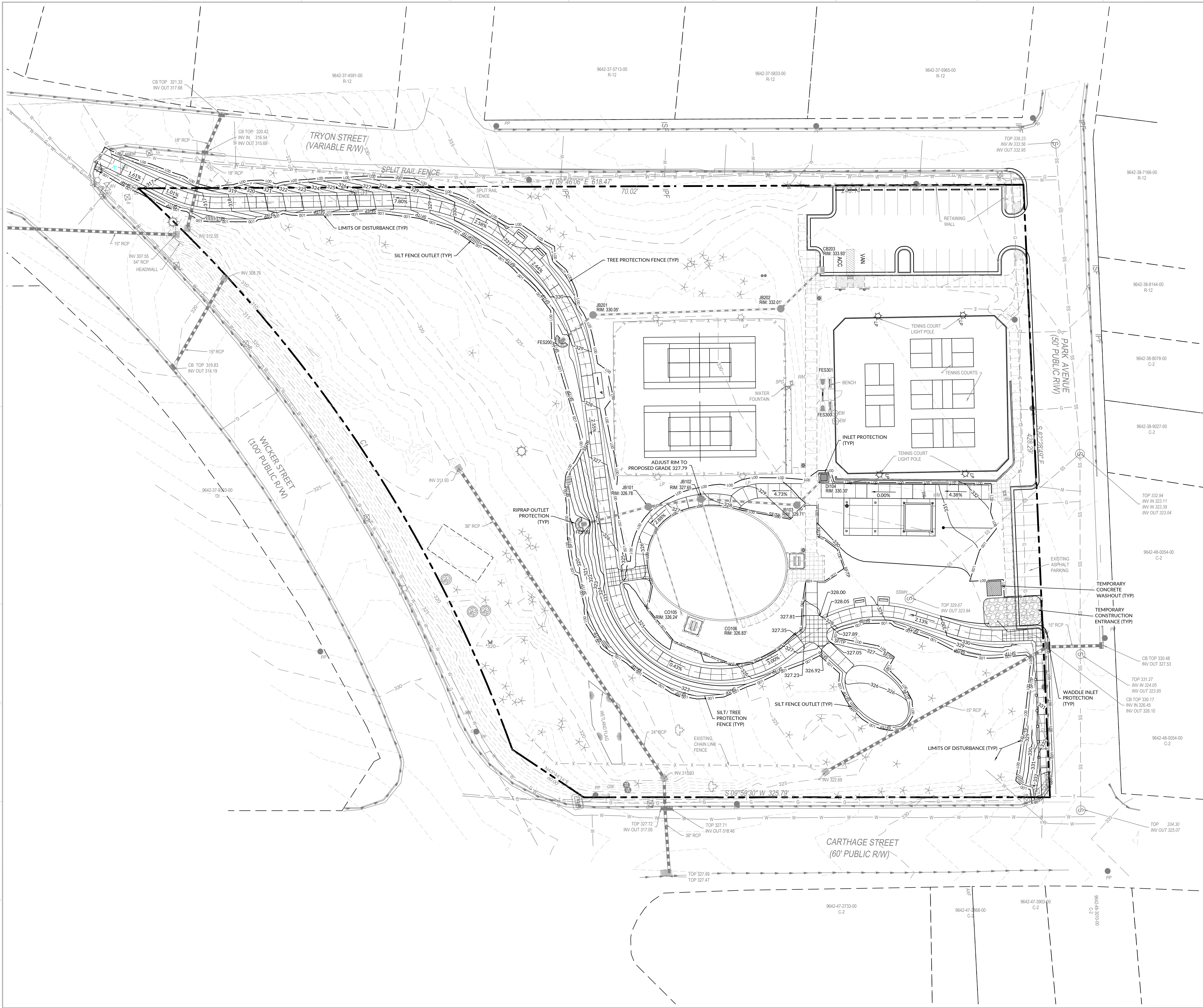
UTILITY PLAN

L3.01

U:\22\05\05\2205\Kiwanis Children's Park Phase II\CAD\Drawing\Sub\Construction\1301 Utility\Plan\Utility February 22, 2024 2:53:05 PM - 11/11/2024

EST. 1993

our people • your success

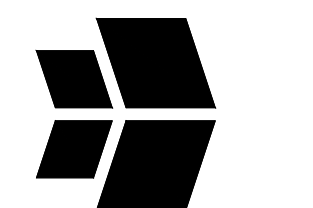


GRADING AND EROSION CONTROL LEGEND

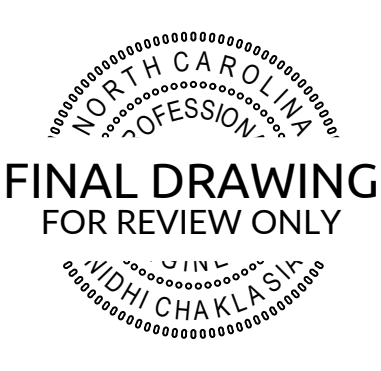
- L00 --- LIMITS OF DISTURBANCE
- 100 --- EXISTING CONTOUR - MAJOR
- 100 --- PROPOSED CONTOUR - MAJOR
- 101 --- PROPOSED CONTOUR - MINOR
- SF/TP --- SILT / TREE PROTECTION FENCE
- TP --- TREE PROTECTION FENCE
- |||--- SILT FENCE OUTLET
- C --- INLET PROTECTION
- R --- RIPRAP OUTLET PROTECTION

TOTAL DISTURBED AREA: 0.99 AC

- NOTES:**
- ALL SIDEWALKS SHALL HAVE MAXIMUM CROSS-SLOPE OF 2%. ALL SIDEWALKS SHALL BE ADA COMPLIANT.
 - TOTAL DISTURBED AREA SHALL BE LESS THAN 1.0 ACRES. IF CONTRACTOR DISTURBS MORE THAN 1.0 ACRES, CONTRACTOR SHALL OBTAIN NCEM PERMITS AS REQUIRED.
 - ALL TIE-IN SIDESLOPES ARE 3:1, UNLESS OTHERWISE NOTED.



RE-BID DOCUMENTS
**KIWANIS CHILDREN'S PARK
 PHASE II**
 101 PARK AVENUE | SANFORD, NC | LEE COUNTY



**FINAL DRAWING
 FOR REVIEW ONLY**

INITIAL PLAN DATE: 01/08/2024
 REVISIONS:
 1. 02/26/2024 ----
 RE-BID

0 15 30
 SCALE: 1 inch = 30 ft.

WR Job No. DATE
 09220249.00 01/08/2024
 DRN: WR DGN: WR CKD: WR

**GRADING &
 EROSION CONTROL
 PLAN**

L4.01

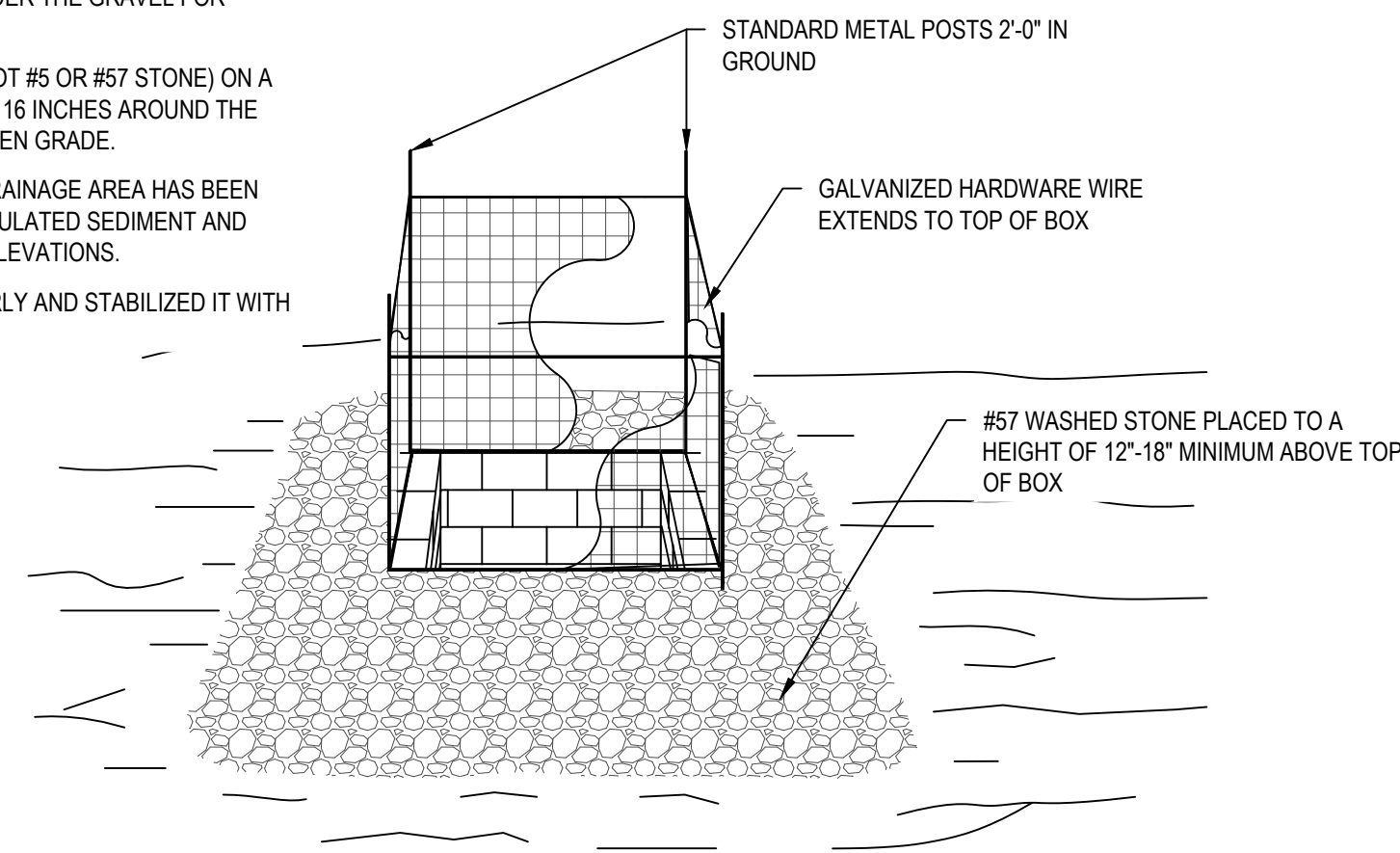
U:\22\0940\22049\Kiwanis Children's Park Phase II\CAD\Drawing\448\Grading\448\Grading.dwg, Plot Date: February 25, 2024, 2:52:38 PM, HBS/PCP

NOTES:

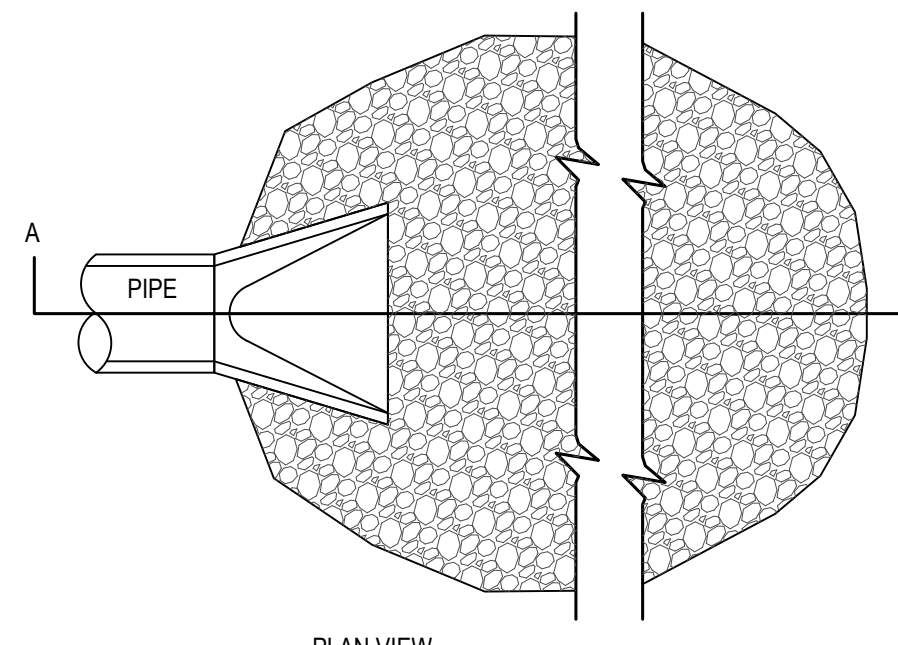
1. UNIFORMLY GRADE A SHALLOW DEPRESSION APPROACHING THE INLET.
2. DRIVE 5-FOOT STEEL POSTS 2 FEET INTO THE GROUND SURROUNDING THE INLET. SPACE POSTS EVENLY AROUND THE PERIMETER OF THE INLET A MAXIMUM OF 4 FEET APART.
3. SURROUND THE POSTS WITH WIRE MESH HARDWARE CLOTH. SECURE THE WIRE MESH TO THE STEEL POSTS AT THE TOP, MIDDLE, AND BOTTOM. PLACE A 2-FOOT FLAP OF THE WIRE MESH UNDER THE GRAVEL FOR ANCHORING.
4. PLACE CLEAN GRAVEL (NO DOT #5 OR #57 STONE) ON A 2:1 SLOPE WITH A HEIGHT OF 16 INCHES AROUND THE WIRE AND SMOOTH TO AN EVEN GRADE.
5. ONCE THE CONTRIBUTING DRAINAGE AREA HAS BEEN STABILIZED, REMOVE ACCUMULATED SEDIMENT AND ESTABLISH FINAL GRADING ELEVATIONS.
6. COMPACT THE AREA PROPERLY AND STABILIZED IT WITH GROUND COVER.

MAINTENANCE NOTE:

INSPECT INLETS AT LEAST WEEKLY AND AFTER EACH SIGNIFICANT (1/2 INCH OR GREATER) RAINFALL EVENT. CLEAR THE MESH WIRE OF ANY DEBRIS OR OTHER OBJECTS TO PROVIDE ADEQUATE FLOW FOR SUBSEQUENT RAINS. TAKE CARE NOT TO DAMAGE OR UNDERCUT THE WIRE MESH DURING SEDIMENT REMOVAL. REPLACE STONE AS NEEDED.



01 HARDWARE CLOTH & GRAVEL INLET PROTECTION
NOT TO SCALE

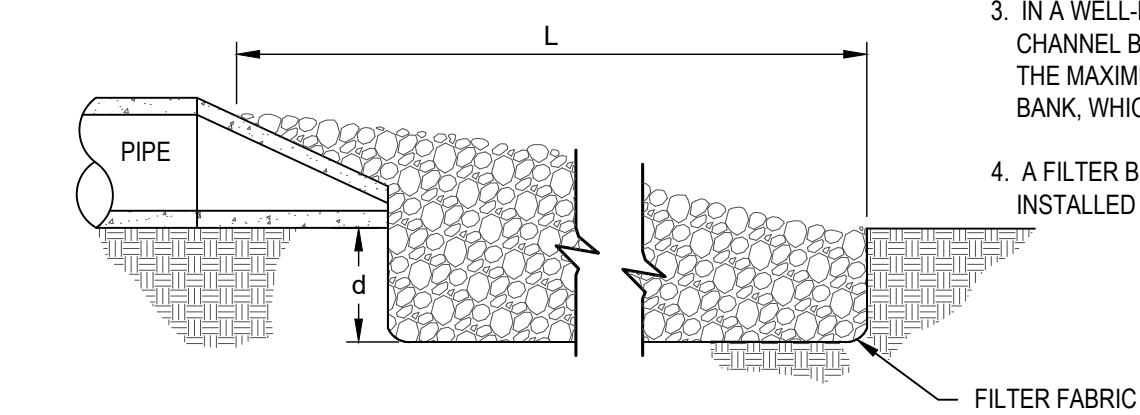


MAINTENANCE NOTE:

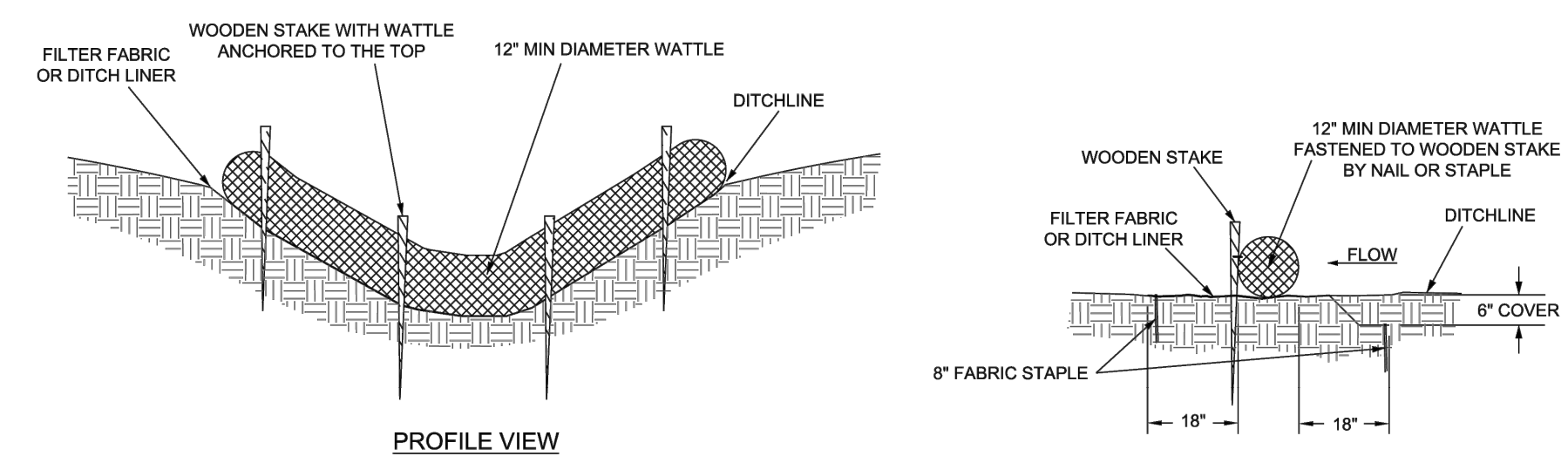
INSPECT RIPRAP OUTLET STRUCTURES WEEKLY AND AFTER SIGNIFICANT (1/2" OR GREATER) RAINFALL EVENTS TO SEE IF ANY EROSION AROUND OR BELOW THE RIPRAP HAS TAKEN PLACE. OR IF STONES HAVE BEEN DISLODGED, IMMEDIATELY MAKE ALL NEEDED REPAIRS TO PREVENT FURTHER DAMAGE.

NOTES:

1. L = THE LENGTH OF THE RIPRAP APRON.
2. d = 1.5 TIMES THE MAXIMUM STONE DIAMETER BUT NOT LESS THAN 6" (INCHES).
3. IN A WELL-DEFINED CHANNEL EXTEND THE APRON UP THE CHANNEL BANKS TO AN ELEVATION OF 6" (INCHES) ABOVE THE MAXIMUM TAILWATER DEPTH OR TO THE TOP OF THE BANK, WHICHEVER IS LESS.
4. A FILTER BLANKET OR FILTER FABRIC SHOULD BE INSTALLED BETWEEN THE RIPRAP AND SOIL FOUNDATION.

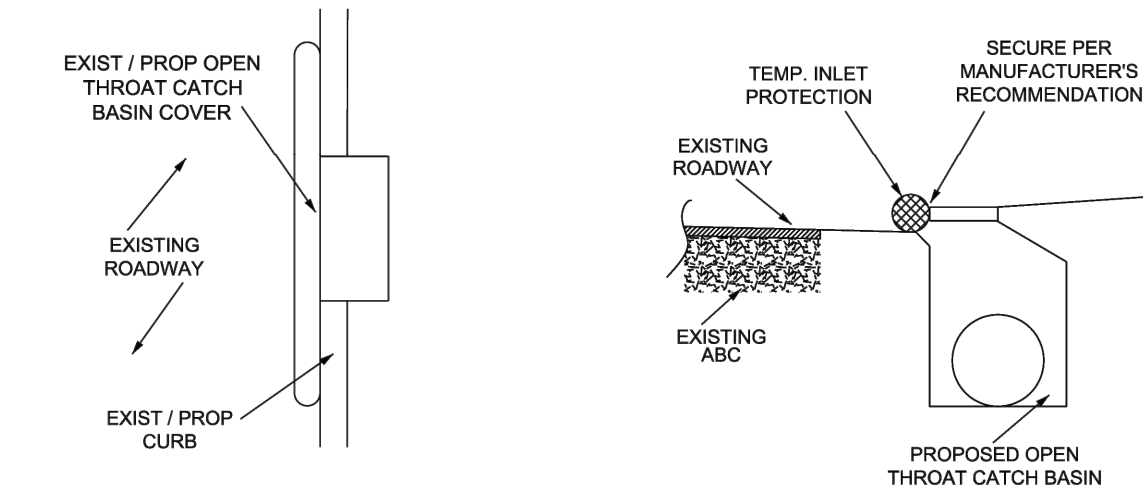


02 RIPRAP OUTLET PROTECTION
NOT TO SCALE

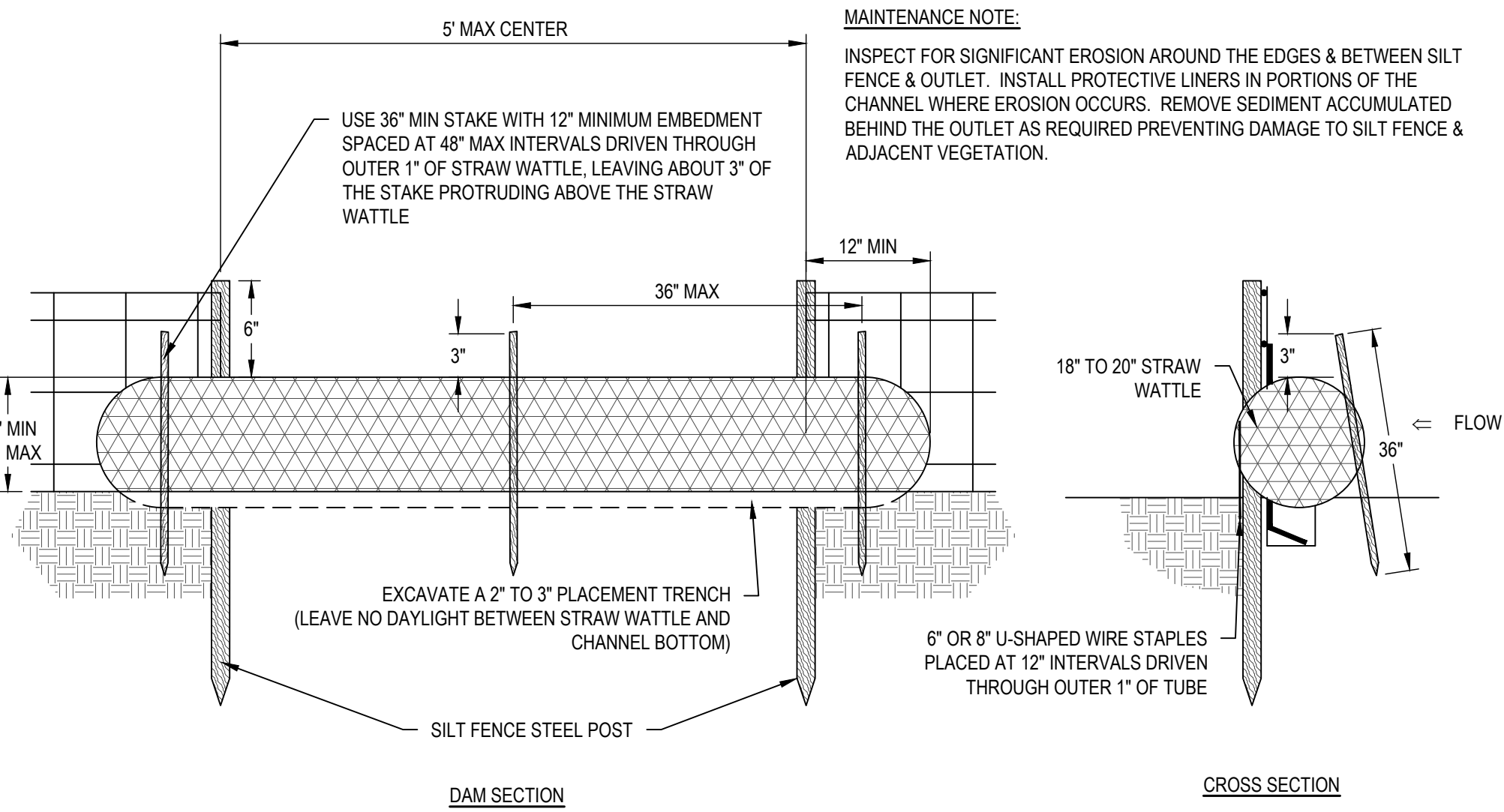


NOTES:

1. WATTLES SHALL BE FILLED WITH STRAW OR OTHER APPROVED MATERIAL.
2. SPACING FOR WATTLES SHALL BE DETERMINED BY THE SITE ENGINEER.
3. WATTLES MAY BE USED FOR PROTECTION OF CATCH BASINS AND DROP INLETS WITH APPROVAL BY THE STORMWATER PROGRAM MANAGER OR DESIGNEE.
4. FOR USE OF WATTLE IN A DITCH, GRADE OF DITCH MUST BE $\le 2.5\%$.



03 WATTLE / INLET PROTECTION
NOT TO SCALE



MAINTENANCE NOTE:

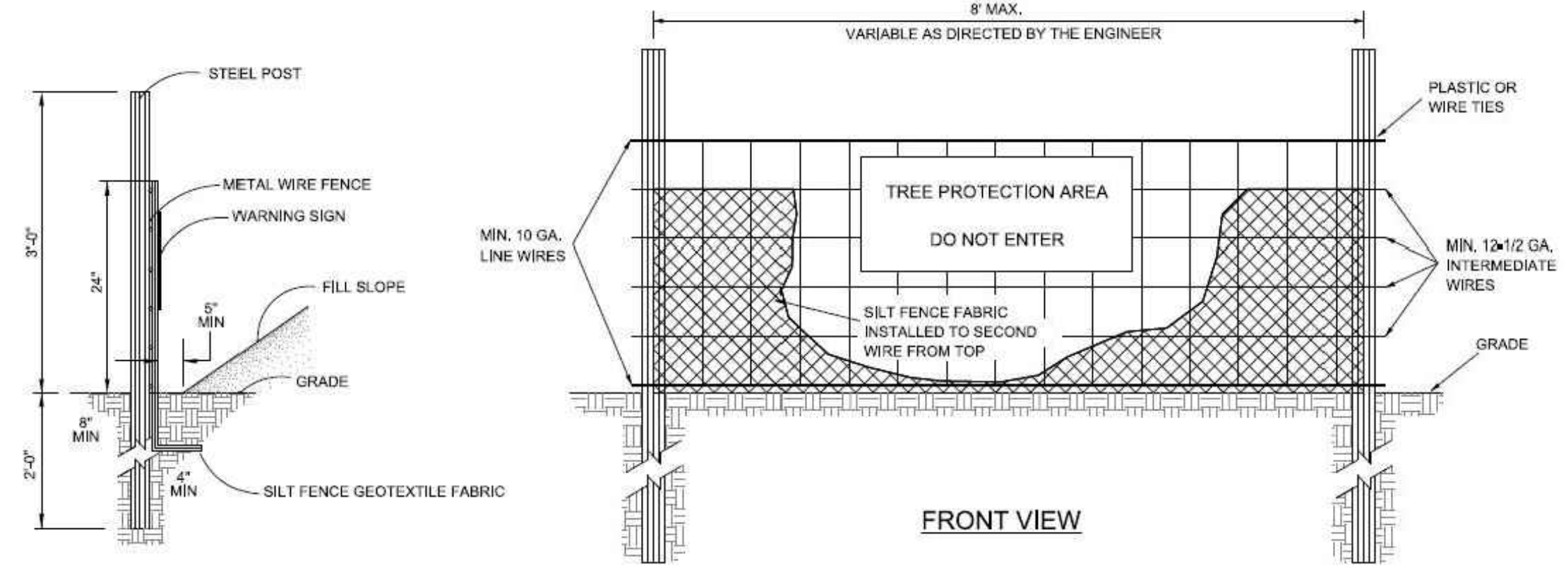
INSPECT FOR SIGNIFICANT EROSION AROUND THE EDGES & BETWEEN SILT FENCE & OUTLET. INSTALL PROTECTIVE LINERS IN PORTIONS OF THE CHANNEL WHERE EROSION OCCURS. REMOVE SEDIMENT ACCUMULATED BEHIND THE OUTLET AS REQUIRED PREVENTING DAMAGE TO SILT FENCE & ADJACENT VEGETATION.

USE 3/8" MIN STAKE WITH 12" MINIMUM EMBEDMENT SPACED AT 48" MAX INTERVALS DRIVEN THROUGH OUTER 1" OF STRAW WATTLE, LEAVING ABOUT 3" OF THE STAKE PROTRUDING ABOVE THE STRAW WATTLE

EXCAVATE A 2" TO 3" PLACEMENT TRENCH (LEAVE NO DAYLIGHT BETWEEN STRAW WATTLE AND CHANNEL BOTTOM)

6" OR 8" U-SHAPED WIRE STAPLES PLACED AT 12" INTERVALS DRIVEN THROUGH OUTER 1" OF TUBE

04 STRAW WATTLE SILT FENCE OUTLET
NOT TO SCALE



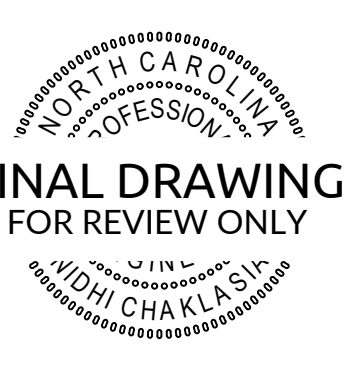
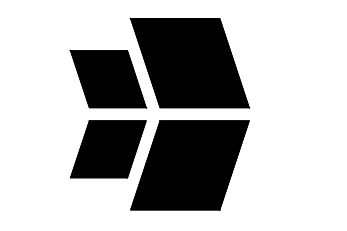
MAINTENANCE: CLEAN OUT AT 50% CAPACITY LIFE OF FENCING: 6-9 MONTHS DO NOT DISTURB TREE CONSERVATION AREAS SILT FENCE SHOULD NOT BE USED ALONE BELOW GRADED SLOPES GREATER THAN 10' IN HEIGHT.

NOTES:

1. TREE PROTECTION FENCING MUST BE INSTALLED AT A MINIMUM RADIUS OF THE CRITICAL ROOT ZONE
2. THE TREE PROTECTION FENCING MUST REMAIN IN PLACE FOR THE DURATION OF THE PROJECT UNLESS OTHERWISE APPROVED BY URBAN FORESTRY STAFF.
3. APPROVED IMPACT PROTECTION DEVICES MUST BE REMOVED AFTER CONSTRUCTION WHEN APPLICABLE.
4. SIGNS SHALL BE PLACED AT 60' MAXIMUM INTERVALS. PLACE A SIGN AT EACH END OF LINEAR TREE PROTECTION AND 50' ON CENTER FOR THE REMAINDER
5. FOR TREE PROTECTION AREAS LESS THAN 200' IN PERIMETER, PROVIDE NO LESS THAN ONE SIGN PER PROTECTED AREA.
6. ATTACH SIGNS SECURELY TO FENCE POSTS AND FABRIC.
7. ADDITIONAL SIGNS MAY BE REQUIRED
8. SIGNS ARE TO BE MADE OF DURABLE, WEATHERPROOF MATERIAL WITH LETTERS A MINIMUM OF 2 1/2" HIGH, CLEARLY LEGIBLE AND SPACED AS SHOWN.
9. FLOW SHALL NOT RUN PARALLEL WITH THE FENCE. END OF SILT FENCE NEEDS TO BE TURNED UPHILL.
10. SEE NC STATE DED PRACTICE STANDARDS & SPECIFICATIONS SEDIMENT FENCE SET FOR CONDITIONS WHERE APPLIES: PLANNING CONSIDERATIONS & DESIGN CRITERIA, (HOWEVER, FLOW SHALL NOT RUN PARALLEL WITH THE TOE OF THE FENCE.)



05 SILT / TREE PROTECTION FENCE
NOT TO SCALE



FINAL DRAWING FOR REVIEW ONLY

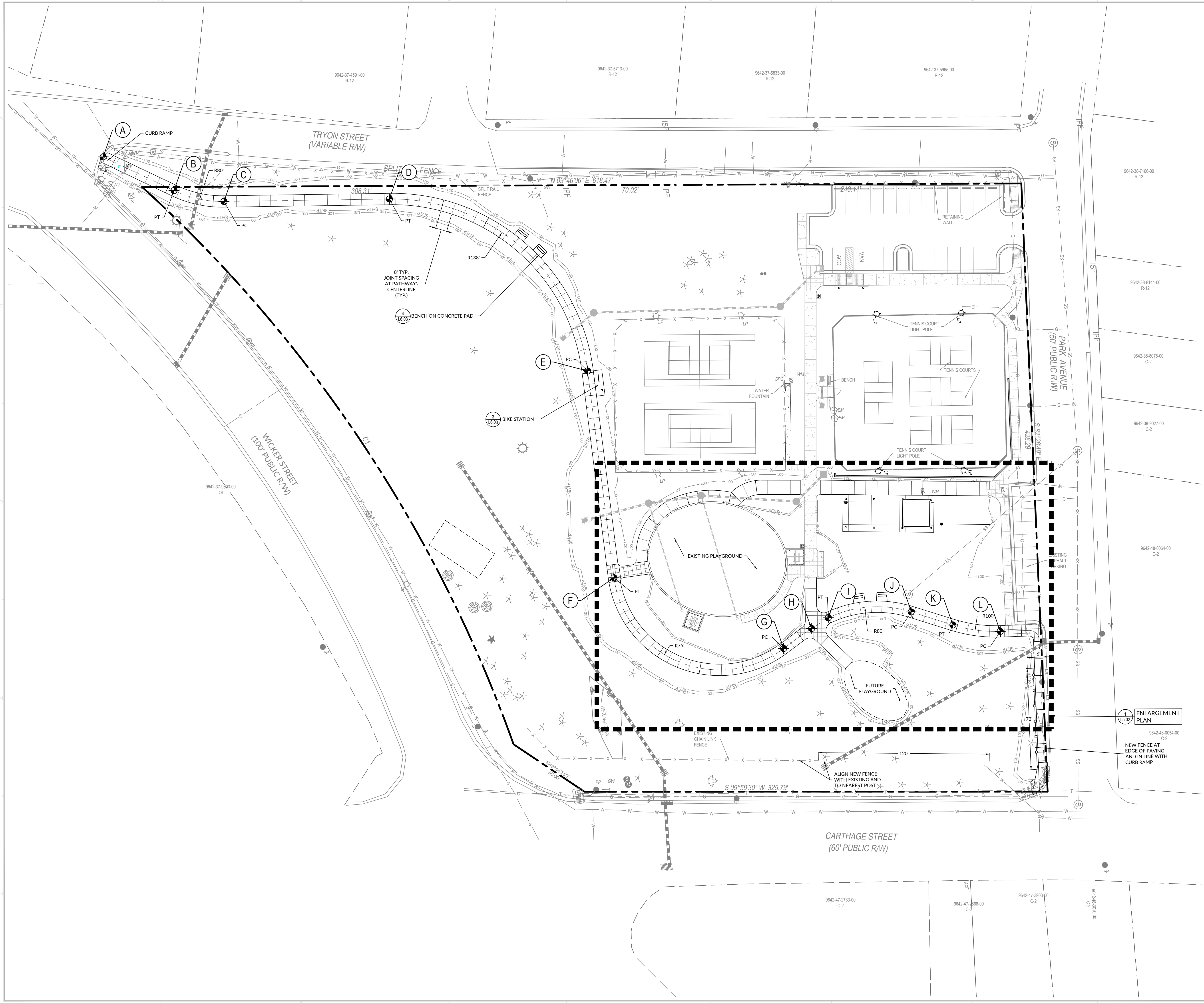
INITIAL PLAN DATE: 01/08/2024
REVISIONS:
1.02/26/2024 ----
RE-BID

WR Job No. DATE
09220249.00 01/08/2024
DRN: WR DGN: WR CKD: WR

**EROSION CONTROL
DETAILS**

L4.02

U:\22\0540\220540\Kiwani's Park Phase II\CAD\Drawing\448\Construction\1\03_050524\KING & BIRDSON\CONTROL PLAN.dwg - Follow - February 23, 2024 2:52:37 PM - HBSP03



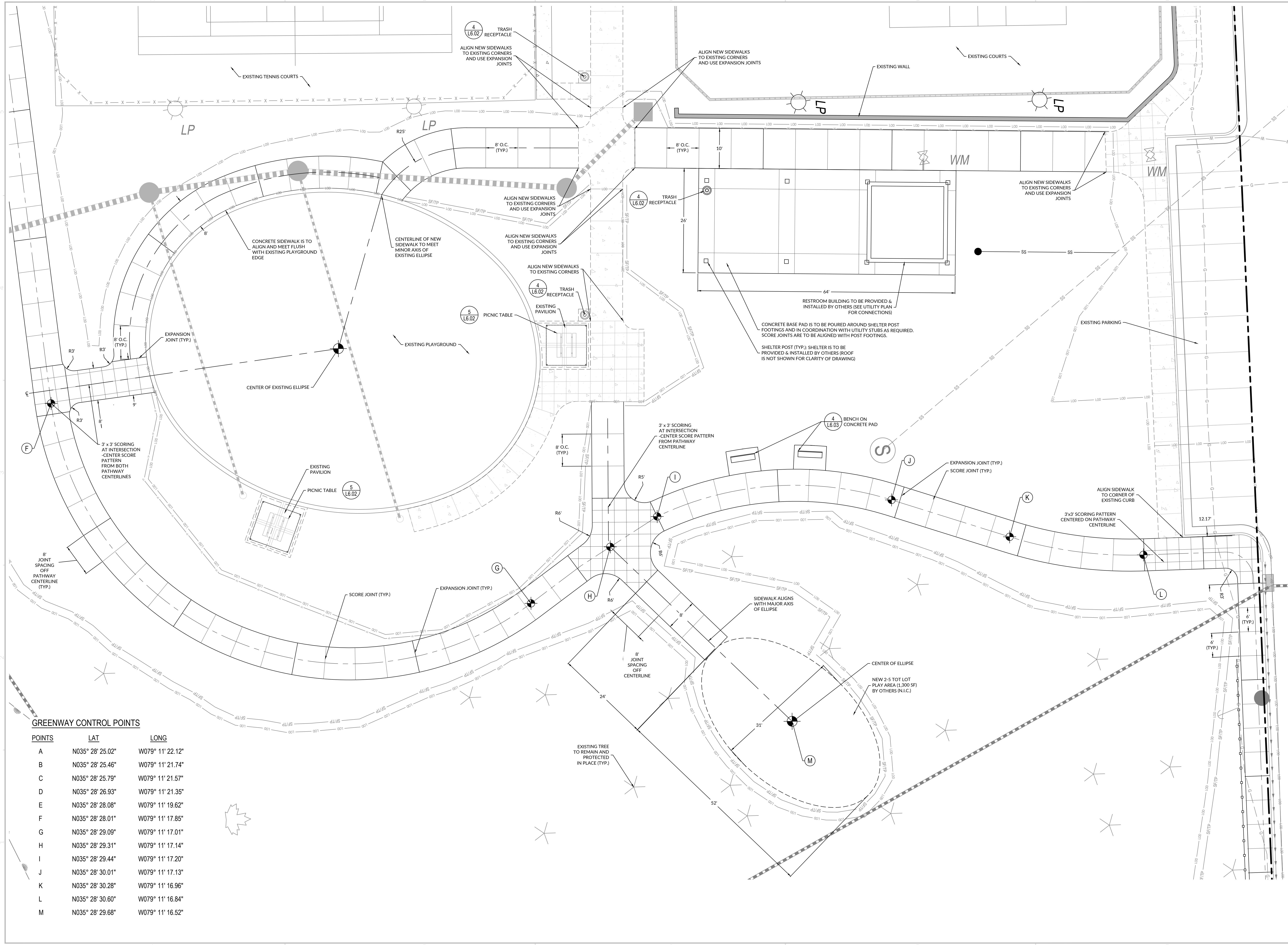
GREENWAY LAYOUT CONTROL POINTS

| POINTS | LAT | LONG |
|--------|------------------|------------------|
| A | N035° 28' 25.02" | W079° 11' 22.12" |
| B | N035° 28' 25.46" | W079° 11' 21.74" |
| C | N035° 28' 25.79" | W079° 11' 21.57" |
| D | N035° 28' 26.93" | W079° 11' 21.35" |
| E | N035° 28' 28.08" | W079° 11' 19.62" |
| F | N035° 28' 28.01" | W079° 11' 17.85" |
| G | N035° 28' 29.09" | W079° 11' 17.01" |
| H | N035° 28' 29.31" | W079° 11' 17.14" |
| I | N035° 28' 29.44" | W079° 11' 17.20" |
| J | N035° 28' 30.01" | W079° 11' 17.13" |
| K | N035° 28' 30.28" | W079° 11' 16.96" |
| L | N035° 28' 30.60" | W079° 11' 16.84" |

ENLARGEMENT PLAN
15.00

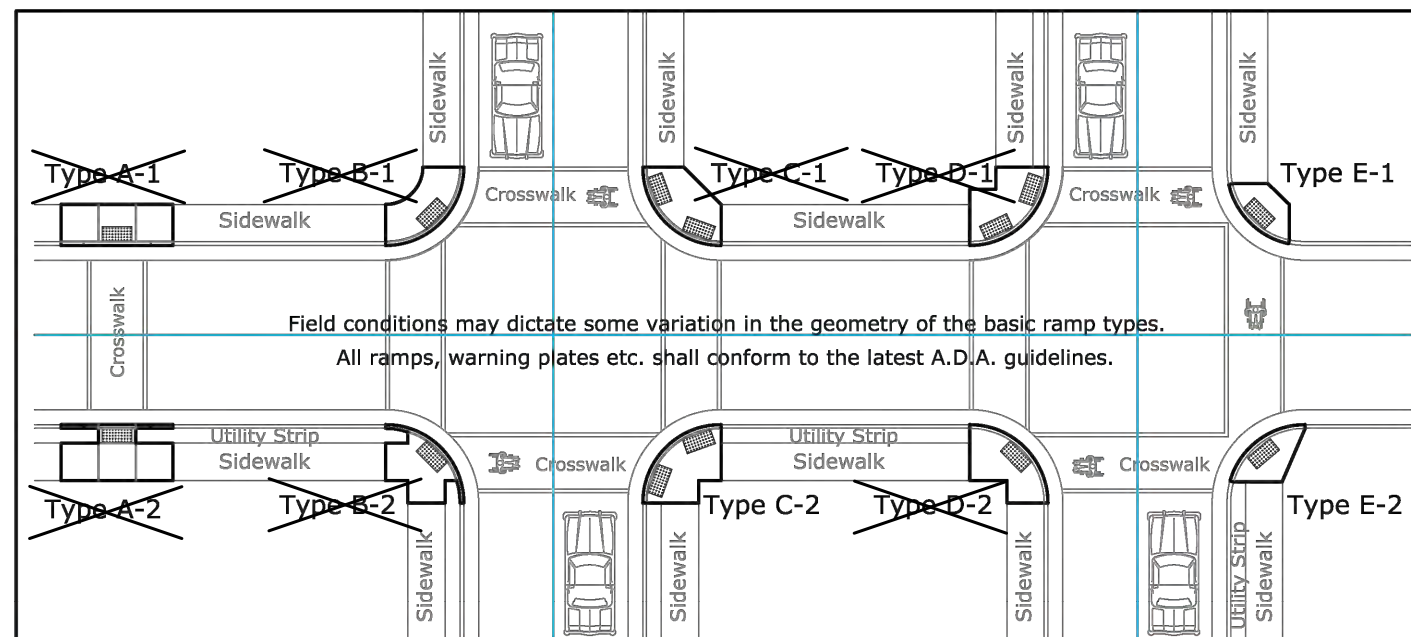
NEW FENCE AT EDGE OF PAVING AND IN LINE WITH CURB RAMP

U:\22\0540\22054\Kiwanis Children's Park Phase II CAD Drawing\540\540-0540-001.dwg, 01/08/2024 11:00:00 AM, 11/08/2024

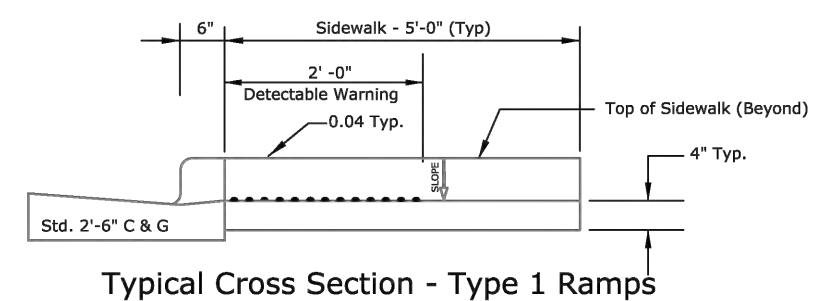


GREENWAY CONTROL POINTS

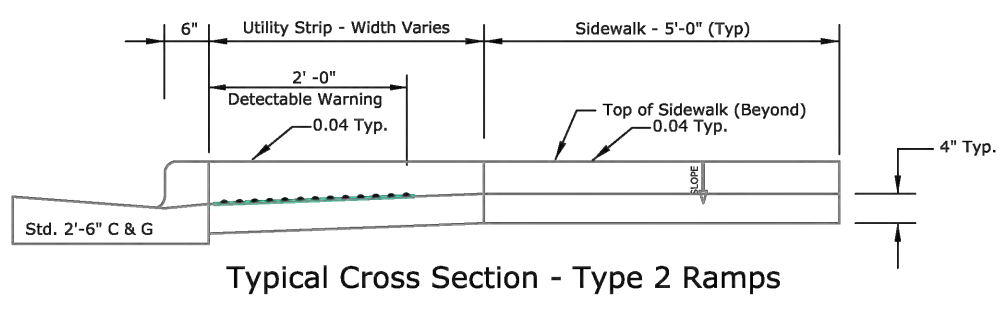
| POINTS | LAT | LONG |
|--------|------------------|------------------|
| A | N035° 28' 25.02" | W079° 11' 22.12" |
| B | N035° 28' 25.46" | W079° 11' 21.74" |
| C | N035° 28' 25.79" | W079° 11' 21.57" |
| D | N035° 28' 26.93" | W079° 11' 21.35" |
| E | N035° 28' 28.08" | W079° 11' 19.62" |
| F | N035° 28' 28.01" | W079° 11' 17.85" |
| G | N035° 28' 29.09" | W079° 11' 17.01" |
| H | N035° 28' 29.31" | W079° 11' 17.14" |
| I | N035° 28' 29.44" | W079° 11' 17.20" |
| J | N035° 28' 30.01" | W079° 11' 17.13" |
| K | N035° 28' 30.28" | W079° 11' 16.96" |
| L | N035° 28' 30.60" | W079° 11' 16.84" |
| M | N035° 28' 29.68" | W079° 11' 16.52" |



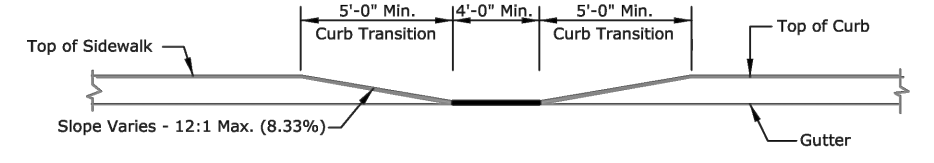
Field conditions may dictate some variation in the geometry of the basic ramp types. All ramps, warning plates etc. shall conform to the latest A.D.A. guidelines.



Typical Cross Section - Type 1 Ramps



Typical Cross Section - Type 2 Ramps



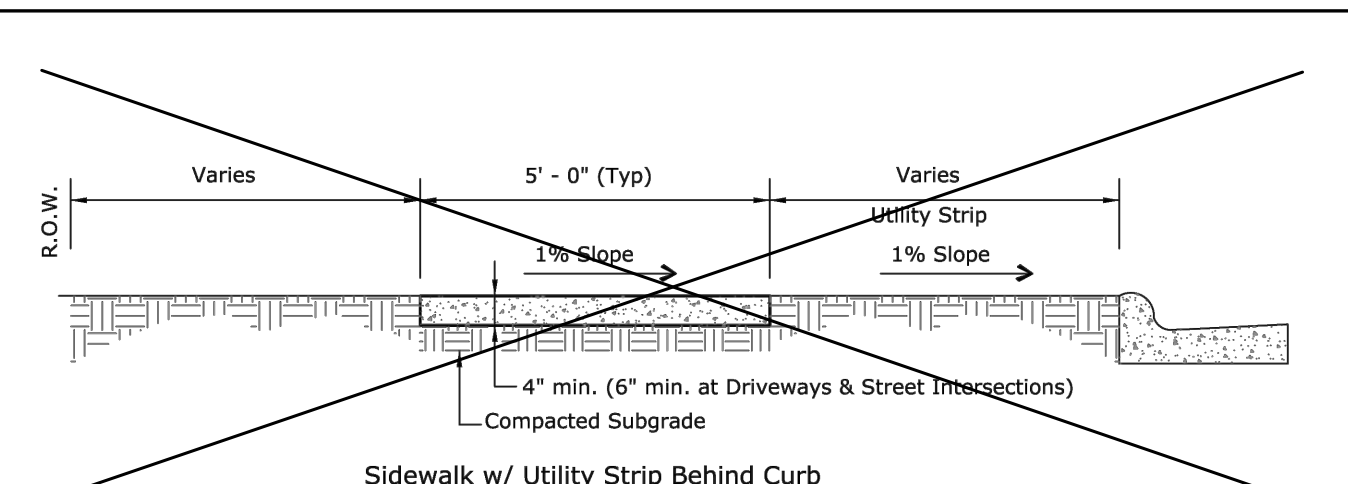
Typical Sidewalk Geometry - All Ramps

- GENERAL NOTES**
- All work shall be in accordance with all applicable local, state and/or federal statutes, or regulations.
 - Place wheelchair ramps at locations designated on the drawings or as directed by the Engineer.
 - Plates with detectable warning surface shall be a minimum of 2' x 3'.
 - Ramp grades shall not exceed 12:1 (8.33%) in relation to the grade of the street.
 - Type B, C, D & E ramps shall be a minimum of 6" thick concrete.

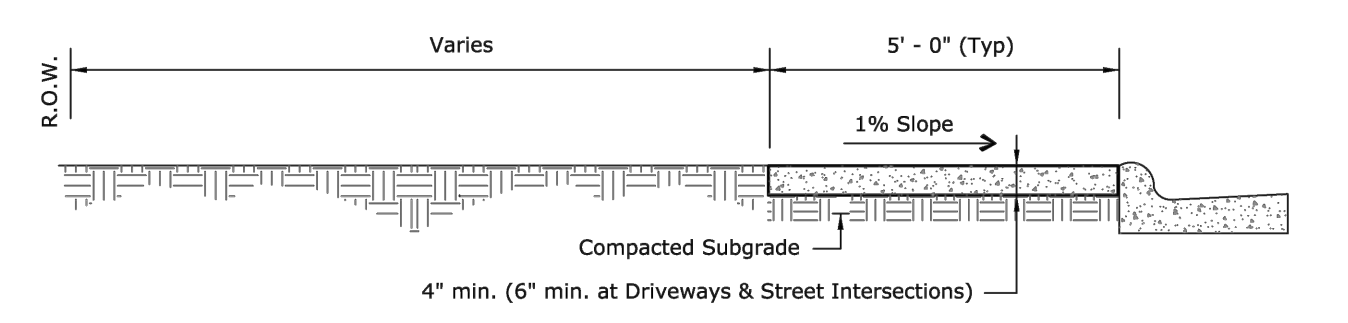
Typical Wheelchair Ramps

City of Sanford Engineering Dept - P.O. Box 3729 - Sanford, NC 27331

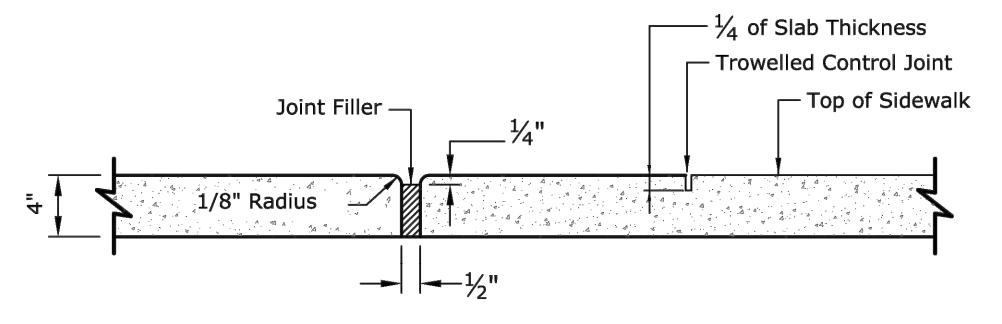
Dwg. No. SD-R-005
Date: 07/10/14
Scale: Not To Scale
Drawn By: Staff



Sidewalk w/ Utility Strip Behind Curb



Sidewalk at Back of Curb



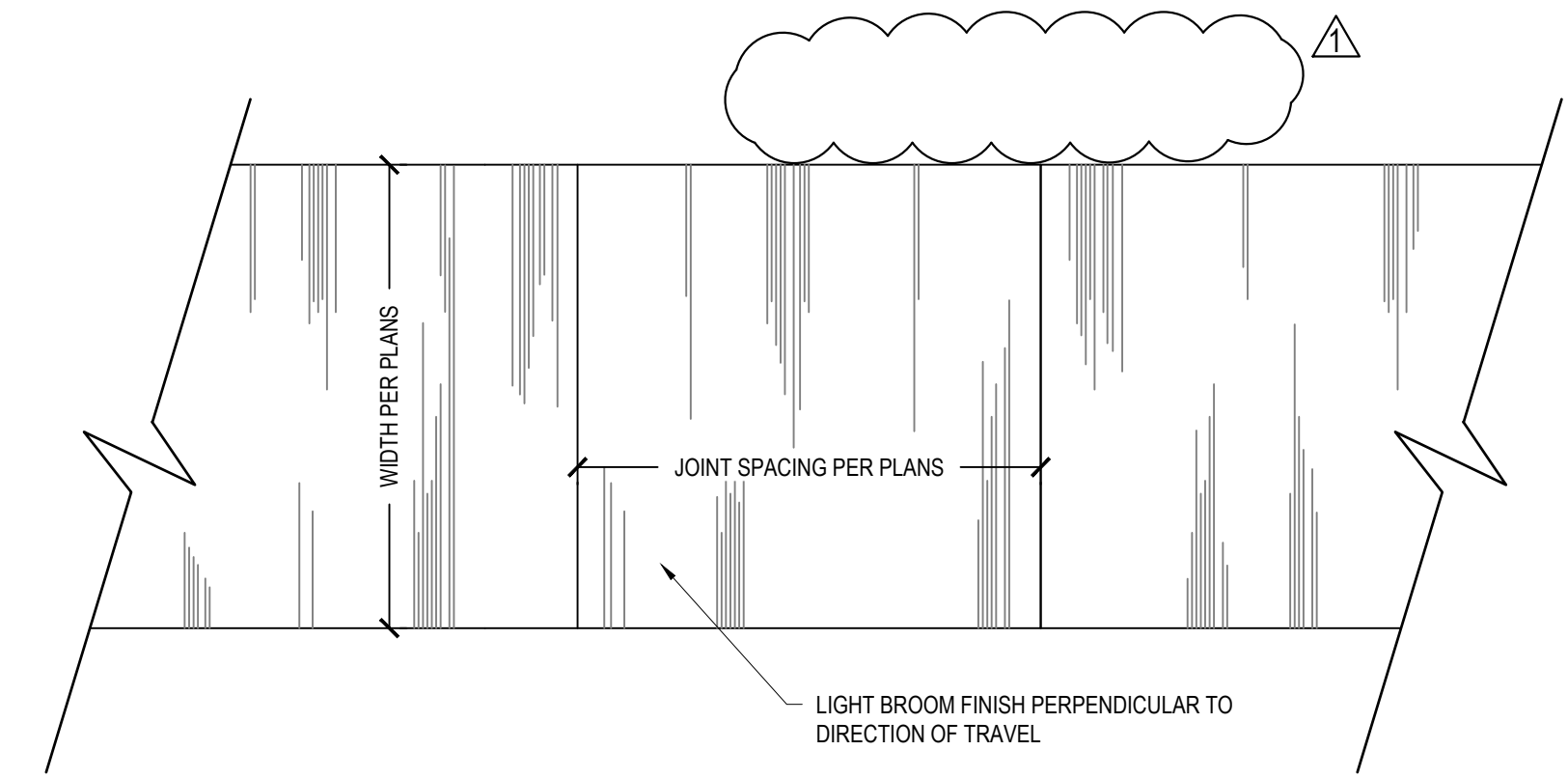
TRANSVERSE EXPANSION JOINT

- Notes:**
- Concrete shall be 3000 psi at 28 days.
Expansion joints shall be 1/2" and have a maximum spacing of 50'.
Contraction joints equals 1/4 of slab thickness.
Control joint spacing shall be divided into 5'± sections using a grooving tool.

Sidewalk

City of Sanford Engineering Dept - P.O. Box 3729 - Sanford, NC 27331

Dwg. No. SD-R-004
Date: 07/10/14
Scale: Not To Scale
Drawn By: Staff

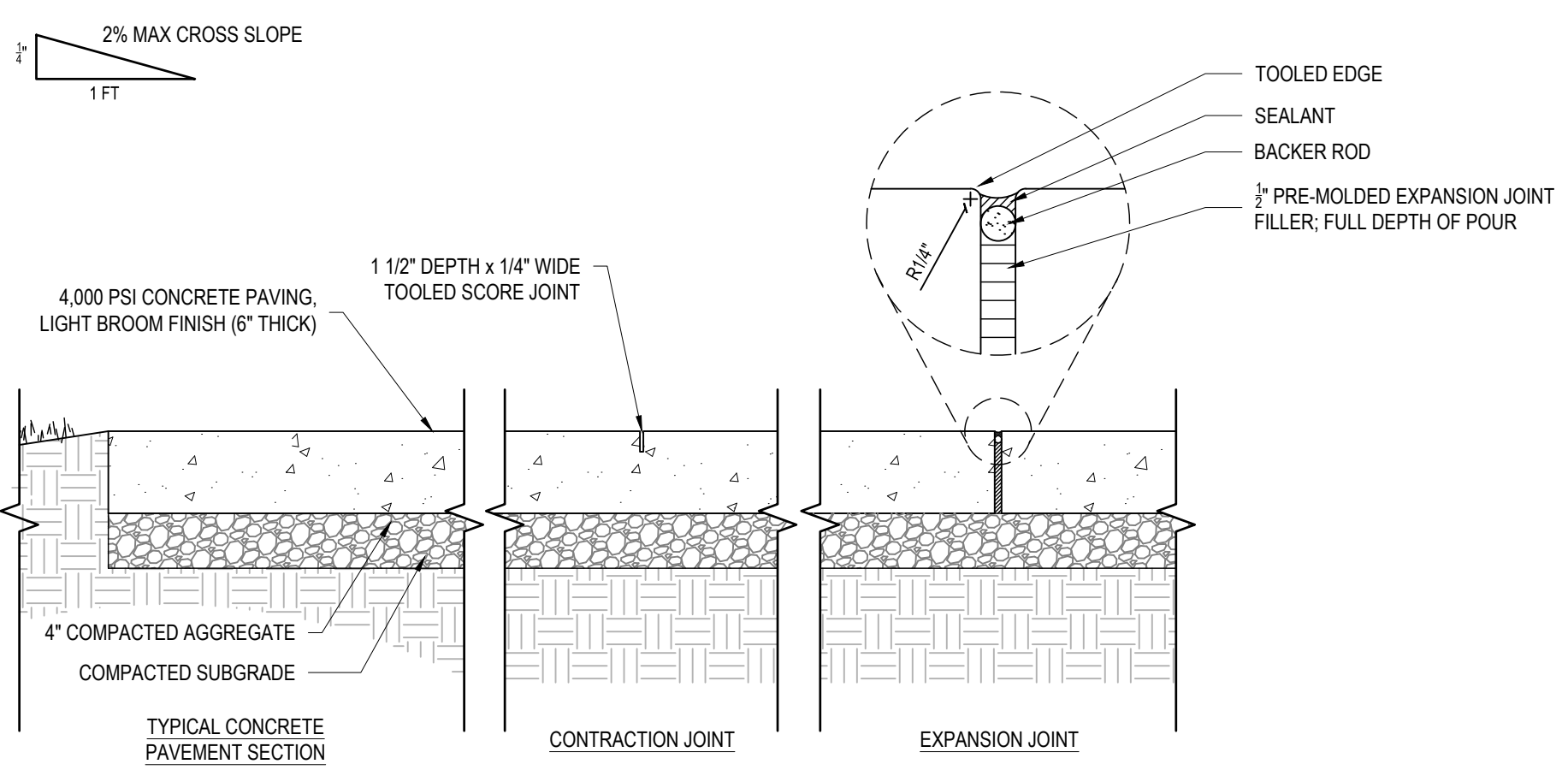


3 CONCRETE FINISH
SCALE: 1/2" = 1'-0"
DETAIL

1 WHEELCHAIR RAMPS - CITY OF SANFORD TYPICAL DETAIL
SCALE: N.T.S. DETAIL

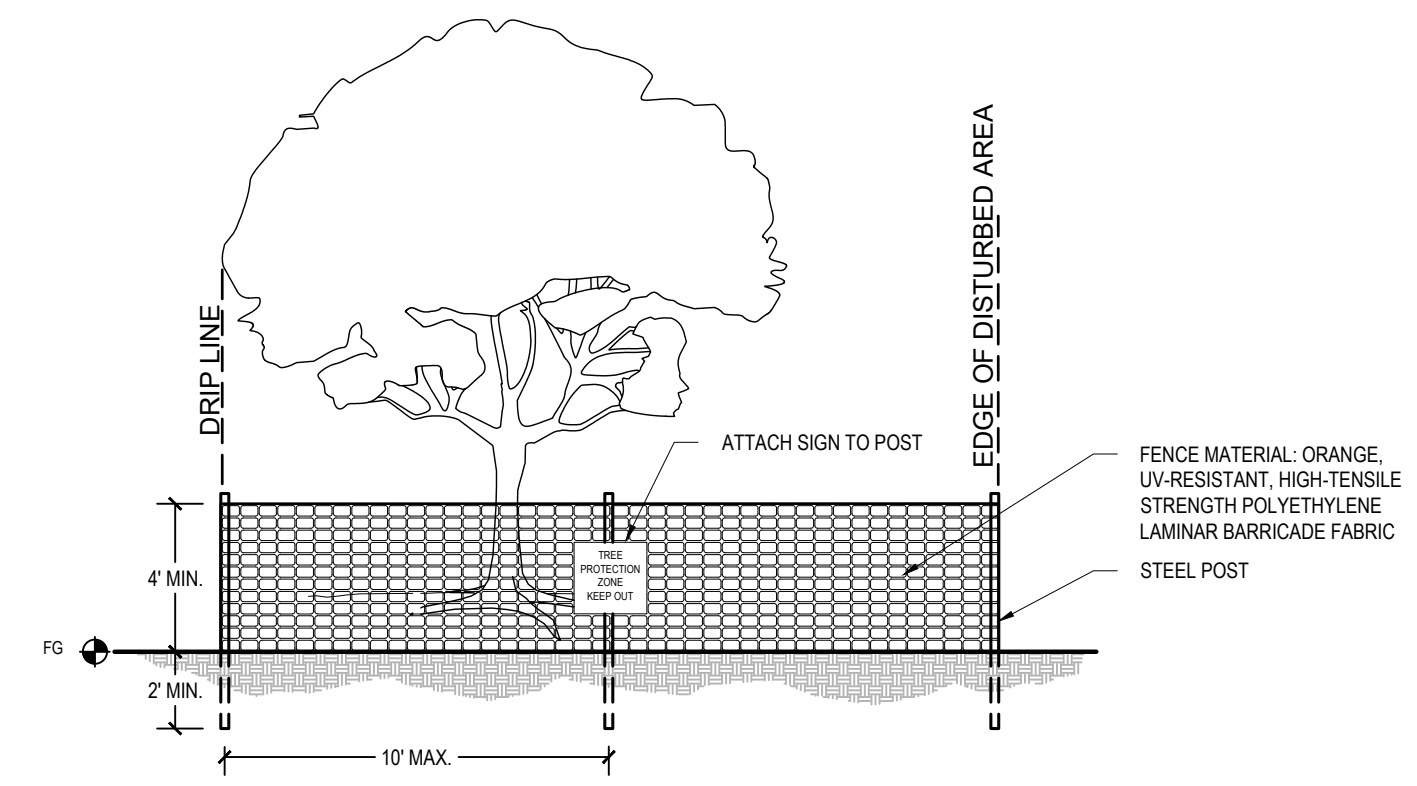
2 SIDEWALK - CITY OF SANFORD TYPICAL DETAIL
SCALE: N.T.S. DETAIL

4 DETAIL NOT USED
SCALE: N.T.S. DETAIL



- NOTES:**
- PROVIDE EXPANSION JOINT WHERE PAVEMENT IS POURED AGAINST VERTICAL SURFACES, DIFFERENT PAVING MATERIALS, AND AS SPECIFIED ON PLANS.
 - EXPANSION JOINTS ARE TO BE SPACED AS NOTED ON THE PLANS, WITH A MAX SPACING OF 25'-0".
 - CONTRACTION JOINTS TO BE SPACED AS NOTED ON THE PLANS. MAXIMUM SPACING IS TO BE 6 FEET.
 - PAVING DESIGN FOR CONCRETE BASE SLAB MEETS REQUIREMENTS OF SHELTER AND RESTROOM BUILDING MANUFACTURER. CONTRACTOR TO CONTACT GEOTECHNICAL ENGINEER FOR ADDITIONAL PAVEMENT RECOMMENDATIONS IF SITE CONDITIONS WARRANT.
 - CONCRETE BASE SLAB IS TO BE INSTALLED AFTER SHELTER POST FOOTINGS AND UTILITY STUBS ARE IN PLACE (BY OTHERS). CONCRETE BASE SLAB SHALL BE INSTALLED TO MEET FLUSH WITH ADJACENT PAVING AS SHOWN ON GRADING PLAN.

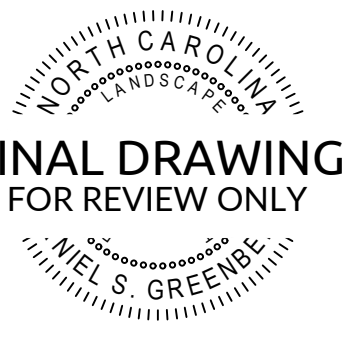
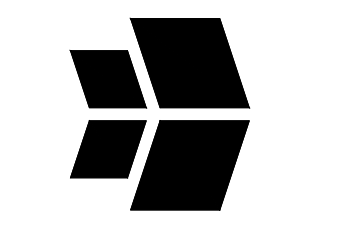
5 CONCRETE BASE PAD FOR SHELTER AND RESTROOM BUILDING
SCALE: 1" = 1'-0" DETAIL



- NOTES:**
- ALL PLANTS DESIGNATED TO BE SAVED SHALL BE PROTECTED BY TREE PROTECTION FENCING AS SHOWN. IN AREAS WHERE SILT FENCE IS REQUIRED ALONG CONSTRUCTION LIMITS, SILT FENCE MAY BE USED IN LIEU OF TREE PROTECTION FENCE.
 - INSTALL TREE PROTECTION FENCE AT OR BEYOND TREE'S DRIP LINE, OR AT EDGE OF DISTURBED AREA, AS SHOWN ON PLANS.
 - TREE PROTECTION FENCE SHALL BE INSTALLED PRIOR TO COMMENCEMENT OF CONSTRUCTION, MAINTAINED THROUGHOUT, AND REMOVED AFTER COMPLETION OF THE WORK.
 - TREE PROTECTION SIGNS SHALL BE SECURELY INSTALLED TO FENCE POSTS, NO GREATER THAN 200 FEET APART. THE SIZE OF EACH SIGN SHALL BE 2x3.5' MINIMUM, AND CONTAIN THE FOLLOWING LANGUAGE IN BOTH ENGLISH AND SPANISH: 'TREE PROTECTION AREA, KEEP OUT'.
 - THERE SHALL BE NO ENCROACHMENT OR STORAGE OF MATERIAL WITHIN THE BOUNDARIES OF THE TREE PROTECTION FENCE.

6 TREE PROTECTION FENCE
SCALE: N.T.S. DETAIL

U:\22-0040-2200-04-Kiwahis Children's Park Phase II CAD Drawing Set Construction\020 SET DETAILS.dwg Wednesday, February 21, 2024 10:35:36 AM - H:\BID\05

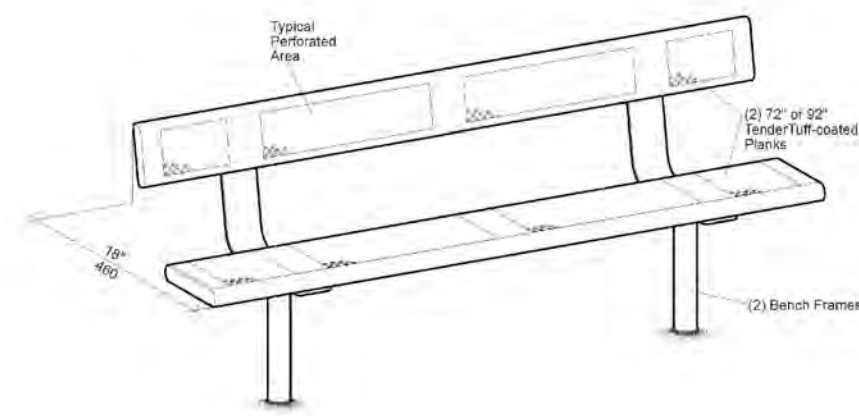


INITIAL PLAN DATE: 01/08/2024
REVISIONS:
1.02/26/2024 ----
RE-BID

WR Job No. DATE
09220249.00 01/08/2024
DRN: WR DGN: WR CKD: WR

SITE DETAILS

L6.01



Parts List

| Part # | Description | Qty |
|--------|-----------------------------|-----|
| 153012 | 1/2" Flat Steel, Speedy Cut | 1 |
| 153013 | 1/2" Flat Steel, Speedy Cut | 1 |
| 153014 | 1/2" Flat Steel, Speedy Cut | 1 |
| 153015 | 1/2" Flat Steel, Speedy Cut | 1 |
| 153016 | 1/2" Flat Steel, Speedy Cut | 1 |
| 153017 | 1/2" Flat Steel, Speedy Cut | 1 |
| 153018 | 1/2" Flat Steel, Speedy Cut | 1 |
| 153019 | 1/2" Flat Steel, Speedy Cut | 1 |
| 153020 | 1/2" Flat Steel, Speedy Cut | 1 |
| 153021 | 1/2" Flat Steel, Speedy Cut | 1 |
| 153022 | 1/2" Flat Steel, Speedy Cut | 1 |
| 153023 | 1/2" Flat Steel, Speedy Cut | 1 |
| 153024 | 1/2" Flat Steel, Speedy Cut | 1 |
| 153025 | 1/2" Flat Steel, Speedy Cut | 1 |
| 153026 | 1/2" Flat Steel, Speedy Cut | 1 |
| 153027 | 1/2" Flat Steel, Speedy Cut | 1 |
| 153028 | 1/2" Flat Steel, Speedy Cut | 1 |
| 153029 | 1/2" Flat Steel, Speedy Cut | 1 |
| 153030 | 1/2" Flat Steel, Speedy Cut | 1 |
| 153031 | 1/2" Flat Steel, Speedy Cut | 1 |
| 153032 | 1/2" Flat Steel, Speedy Cut | 1 |
| 153033 | 1/2" Flat Steel, Speedy Cut | 1 |
| 153034 | 1/2" Flat Steel, Speedy Cut | 1 |
| 153035 | 1/2" Flat Steel, Speedy Cut | 1 |
| 153036 | 1/2" Flat Steel, Speedy Cut | 1 |
| 153037 | 1/2" Flat Steel, Speedy Cut | 1 |
| 153038 | 1/2" Flat Steel, Speedy Cut | 1 |
| 153039 | 1/2" Flat Steel, Speedy Cut | 1 |
| 153040 | 1/2" Flat Steel, Speedy Cut | 1 |
| 153041 | 1/2" Flat Steel, Speedy Cut | 1 |
| 153042 | 1/2" Flat Steel, Speedy Cut | 1 |
| 153043 | 1/2" Flat Steel, Speedy Cut | 1 |
| 153044 | 1/2" Flat Steel, Speedy Cut | 1 |
| 153045 | 1/2" Flat Steel, Speedy Cut | 1 |
| 153046 | 1/2" Flat Steel, Speedy Cut | 1 |
| 153047 | 1/2" Flat Steel, Speedy Cut | 1 |
| 153048 | 1/2" Flat Steel, Speedy Cut | 1 |
| 153049 | 1/2" Flat Steel, Speedy Cut | 1 |
| 153050 | 1/2" Flat Steel, Speedy Cut | 1 |
| 153051 | 1/2" Flat Steel, Speedy Cut | 1 |
| 153052 | 1/2" Flat Steel, Speedy Cut | 1 |
| 153053 | 1/2" Flat Steel, Speedy Cut | 1 |
| 153054 | 1/2" Flat Steel, Speedy Cut | 1 |
| 153055 | 1/2" Flat Steel, Speedy Cut | 1 |
| 153056 | 1/2" Flat Steel, Speedy Cut | 1 |
| 153057 | 1/2" Flat Steel, Speedy Cut | 1 |
| 153058 | 1/2" Flat Steel, Speedy Cut | 1 |
| 153059 | 1/2" Flat Steel, Speedy Cut | 1 |
| 153060 | 1/2" Flat Steel, Speedy Cut | 1 |
| 153061 | 1/2" Flat Steel, Speedy Cut | 1 |
| 153062 | 1/2" Flat Steel, Speedy Cut | 1 |
| 153063 | 1/2" Flat Steel, Speedy Cut | 1 |
| 153064 | 1/2" Flat Steel, Speedy Cut | 1 |
| 153065 | 1/2" Flat Steel, Speedy Cut | 1 |
| 153066 | 1/2" Flat Steel, Speedy Cut | 1 |
| 153067 | 1/2" Flat Steel, Speedy Cut | 1 |
| 153068 | 1/2" Flat Steel, Speedy Cut | 1 |
| 153069 | 1/2" Flat Steel, Speedy Cut | 1 |
| 153070 | 1/2" Flat Steel, Speedy Cut | 1 |
| 153071 | 1/2" Flat Steel, Speedy Cut | 1 |
| 153072 | 1/2" Flat Steel, Speedy Cut | 1 |
| 153073 | 1/2" Flat Steel, Speedy Cut | 1 |
| 153074 | 1/2" Flat Steel, Speedy Cut | 1 |
| 153075 | 1/2" Flat Steel, Speedy Cut | 1 |
| 153076 | 1/2" Flat Steel, Speedy Cut | 1 |
| 153077 | 1/2" Flat Steel, Speedy Cut | 1 |
| 153078 | 1/2" Flat Steel, Speedy Cut | 1 |
| 153079 | 1/2" Flat Steel, Speedy Cut | 1 |
| 153080 | 1/2" Flat Steel, Speedy Cut | 1 |
| 153081 | 1/2" Flat Steel, Speedy Cut | 1 |
| 153082 | 1/2" Flat Steel, Speedy Cut | 1 |
| 153083 | 1/2" Flat Steel, Speedy Cut | 1 |
| 153084 | 1/2" Flat Steel, Speedy Cut | 1 |
| 153085 | 1/2" Flat Steel, Speedy Cut | 1 |
| 153086 | 1/2" Flat Steel, Speedy Cut | 1 |
| 153087 | 1/2" Flat Steel, Speedy Cut | 1 |
| 153088 | 1/2" Flat Steel, Speedy Cut | 1 |
| 153089 | 1/2" Flat Steel, Speedy Cut | 1 |
| 153090 | 1/2" Flat Steel, Speedy Cut | 1 |
| 153091 | 1/2" Flat Steel, Speedy Cut | 1 |
| 153092 | 1/2" Flat Steel, Speedy Cut | 1 |
| 153093 | 1/2" Flat Steel, Speedy Cut | 1 |
| 153094 | 1/2" Flat Steel, Speedy Cut | 1 |
| 153095 | 1/2" Flat Steel, Speedy Cut | 1 |
| 153096 | 1/2" Flat Steel, Speedy Cut | 1 |
| 153097 | 1/2" Flat Steel, Speedy Cut | 1 |
| 153098 | 1/2" Flat Steel, Speedy Cut | 1 |
| 153099 | 1/2" Flat Steel, Speedy Cut | 1 |
| 153100 | 1/2" Flat Steel, Speedy Cut | 1 |

Specifications

Seat Plank: Fabricated from 1 1/2" x 1 1/2" x 1/4" (120") HERPO sheet and perforated plate precision punched. 10" high, 17" long and 13" wide, 4" deep with 1/2" diameter holes in regular 16" spacing. Finish: TenderTuff-coated.

Back Plank: Fabricated from 1 1/2" x 1 1/2" x 1/4" (120") HERPO sheet and perforated plate precision punched. 6" wide x 27" long and 4" deep with 1/2" diameter holes in regular 16" spacing. Finish: TenderTuff-coated.

Leg: Welded steel comprised of 2 3/4" x 1/4" x 1/4" (120") steel angles. Finish: TenderTuff-coated.

Evidence: Primary surfaces shall be welded and primed per manufacturer's design. Manufacturer's (MFG) specifications shall be followed unless otherwise indicated on specific product installation specifications.

Installation: 1. Firm base.
2. DBS - 2400 sq. ft. B.
3. DBS - 111 sq. ft. B.
4. DBS - 111 sq. ft. B.
5. DBS - 111 sq. ft. B.
6. DBS - 111 sq. ft. B.

Installation Instructions

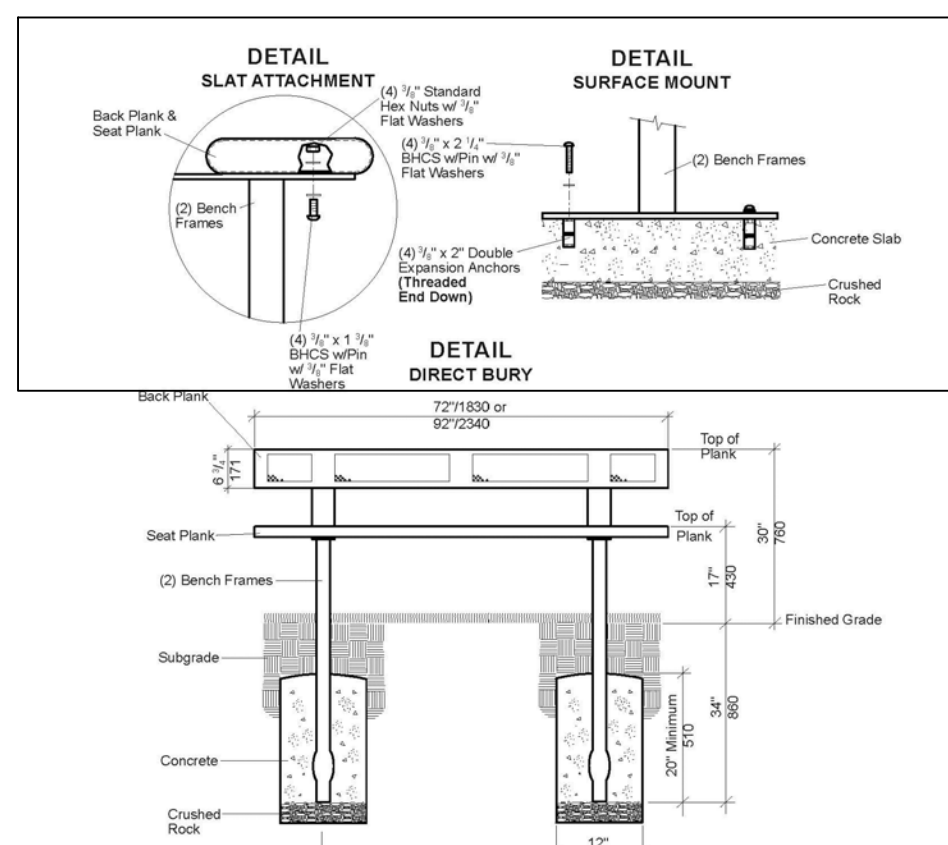
1. Attach seatback and backrest to the frame using 1/2" x 1/4" flat steel strips with 1/2" flat washers and 1/2" standard hex nuts with 1/2" flat washers, as shown.

2. (Over Back) - Dig footing holes and temporarily brace in place and level position. Pour concrete footings and let cure for a minimum of 24 hours before continuing to install.

Character Mount: Set assembled bench in proper position and use a center punch to mark expansion anchor locations.

Move bench ends and drill 1/2" x 2 1/2" deep holes into concrete, using a hammer drill and 1/2" diameter bit. N.B. Drill holes perpendicular to the work surface. To ensure full hole penetration, drill from both ends of the hole and use a utility string line to verify alignment. Clean holes using compressed air.

Top double expansion anchors (with brackets and sleeves) into drilled holes. Expand bench frames back to expansion anchors, using 1/2" x 2 1/2" flat steel strips and 1/2" flat washers.



Site Furnishings 141683 Bench, TenderTuff-coated, w/Back

Site Furnishings 141683 Bench, TenderTuff-coated, w/Back

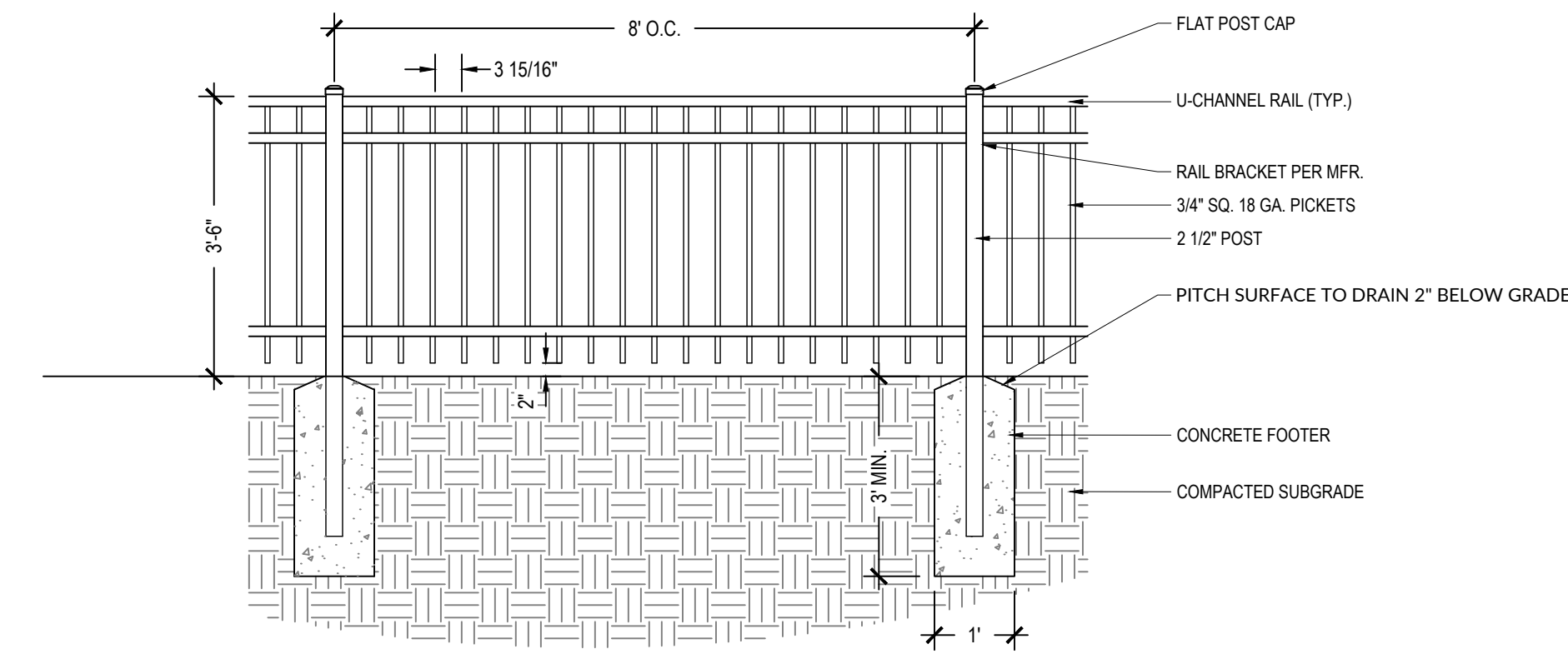
- NOTES**
- BENCHES ARE TO MATCH EXISTING BENCHES ON SITE IN PRODUCT, FINISH AND COLOR.
 - BENCHES ARE TO BE SURFACE MOUNTED TO CONCRETE PADS.

1 BENCH
SCALE: N.T.S.

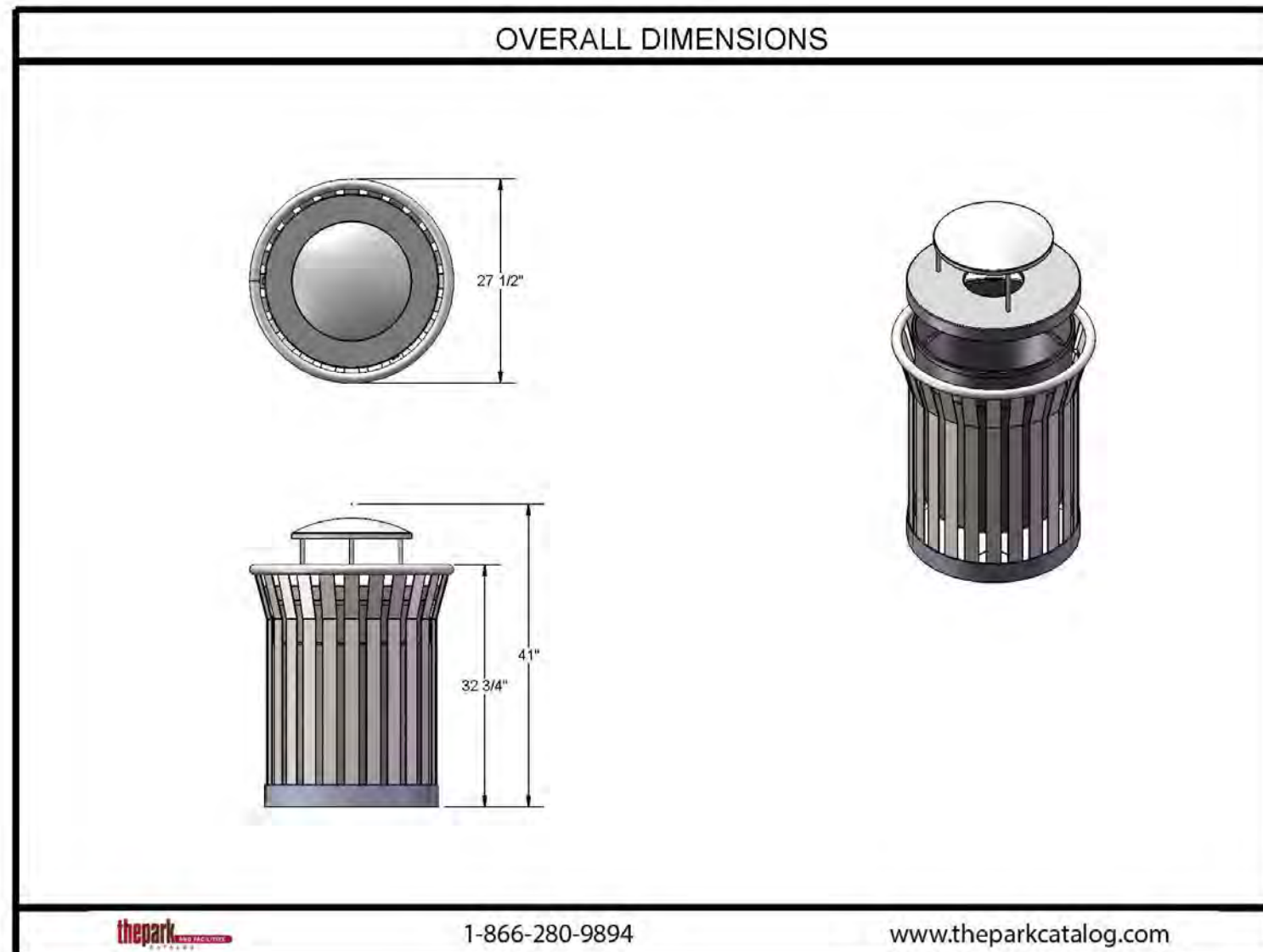
DETAIL

2 ORNAMENTAL METAL FENCE
SCALE: N.T.S.

DETAIL



- NOTES**
- ALL COMPONENTS TO BE STEEL WITH BLACK POWDER COAT FINISH.
 - ALL ATYPICAL FENCE PANEL LENGTHS ARE TO BE LOCATED AT END OF FENCE RUN, AND HAVE A MINIMUM LENGTH OF 4 FEET.
 - FENCE DIMENSIONS AND LAYOUT SHALL BE FINALIZED IN SHOP DRAWING PROCESS.
 - FENCE ON CARTHAGE STREET IS TO ABUT THE EXISTING CHAIN LINK FENCE. CONTRACTOR IS TO CLARIFY IN SHOP DRAWINGS HOW THIS TRANSITION IS TO BE CONSTRUCTED.
 - FENCE BASIS OF DESIGN PRODUCT: MONTAGE PLUS MAJESTIC BY AMERSTAR FENCE (www.amerstarfence.com).



398-8002 36 GALLON TRASH RECEPTACLE

Material: Sides are fabricated with 1-1/2" x 1/4" flat steel strips. Top and bottom rings are 1" pipe. Bottom plate fabricated from 10 gauge sheet steel precision punched. All electrically MIG welded.

Receptacle Coating: Steel is sandblasted to near white condition. Then coated with electrostatic powder coat, oven cured.

Receptacle Dimensions: 32-3/4" high x 27-1/2" in diameter x 36 gallon capacity.

32 GALLON RAIN BONNET TOP

Material: Top plate shall be fabricated from 18 gauge steel flat, spun to form. Vertical posts are 1/2" diameter steel rods. Bonnet top shall be fabricated from 20 gauge steel flat, spun to form. All electrically MIG welded.

Coating: Steel is sandblasted to near white condition. Then coated with electrostatic powder coat, oven cured.

Top Dimensions: Center opening shall be an 8" inside diameter. The overall dimensions shall be 23-1/2" x 13" high.

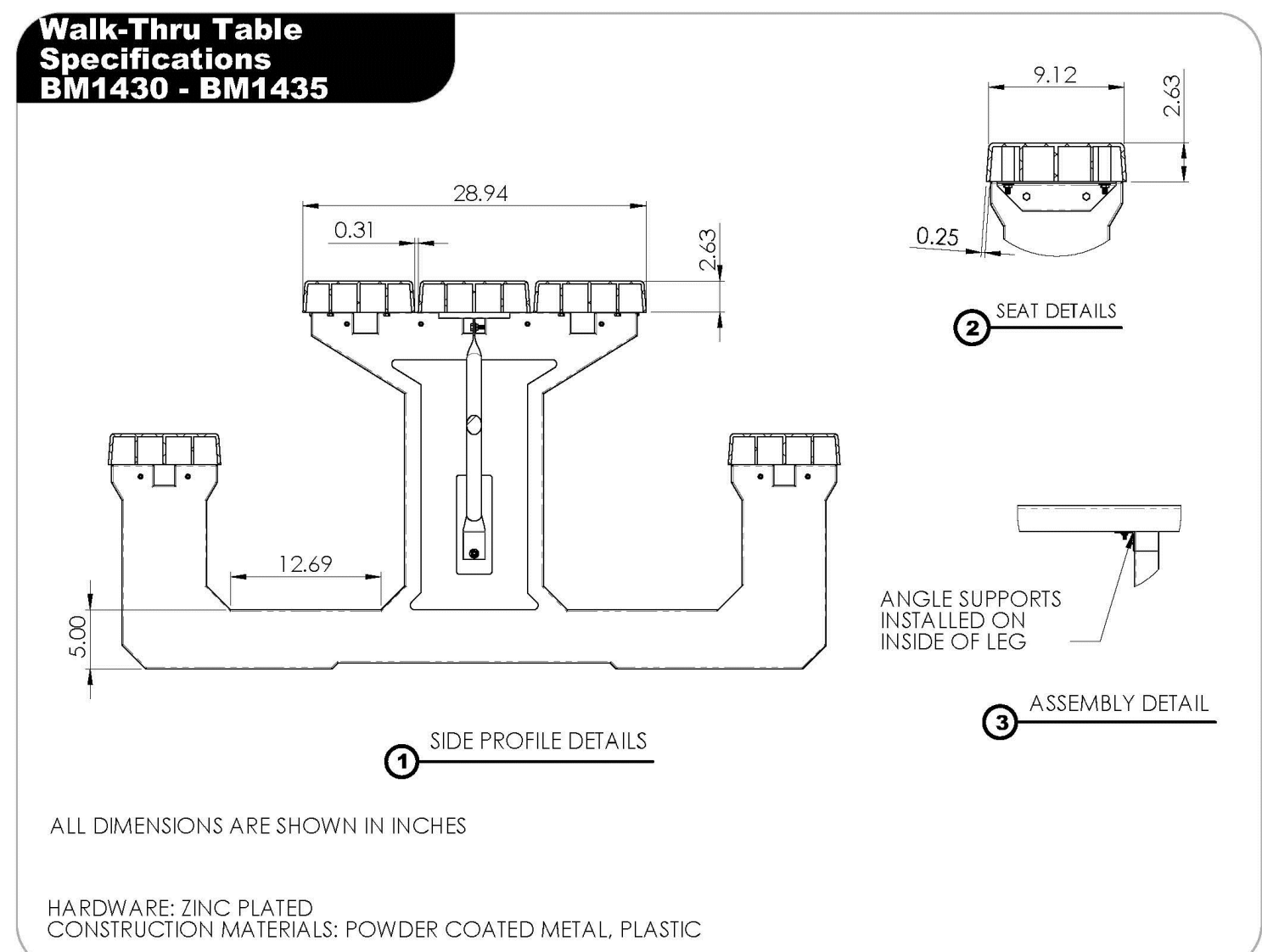
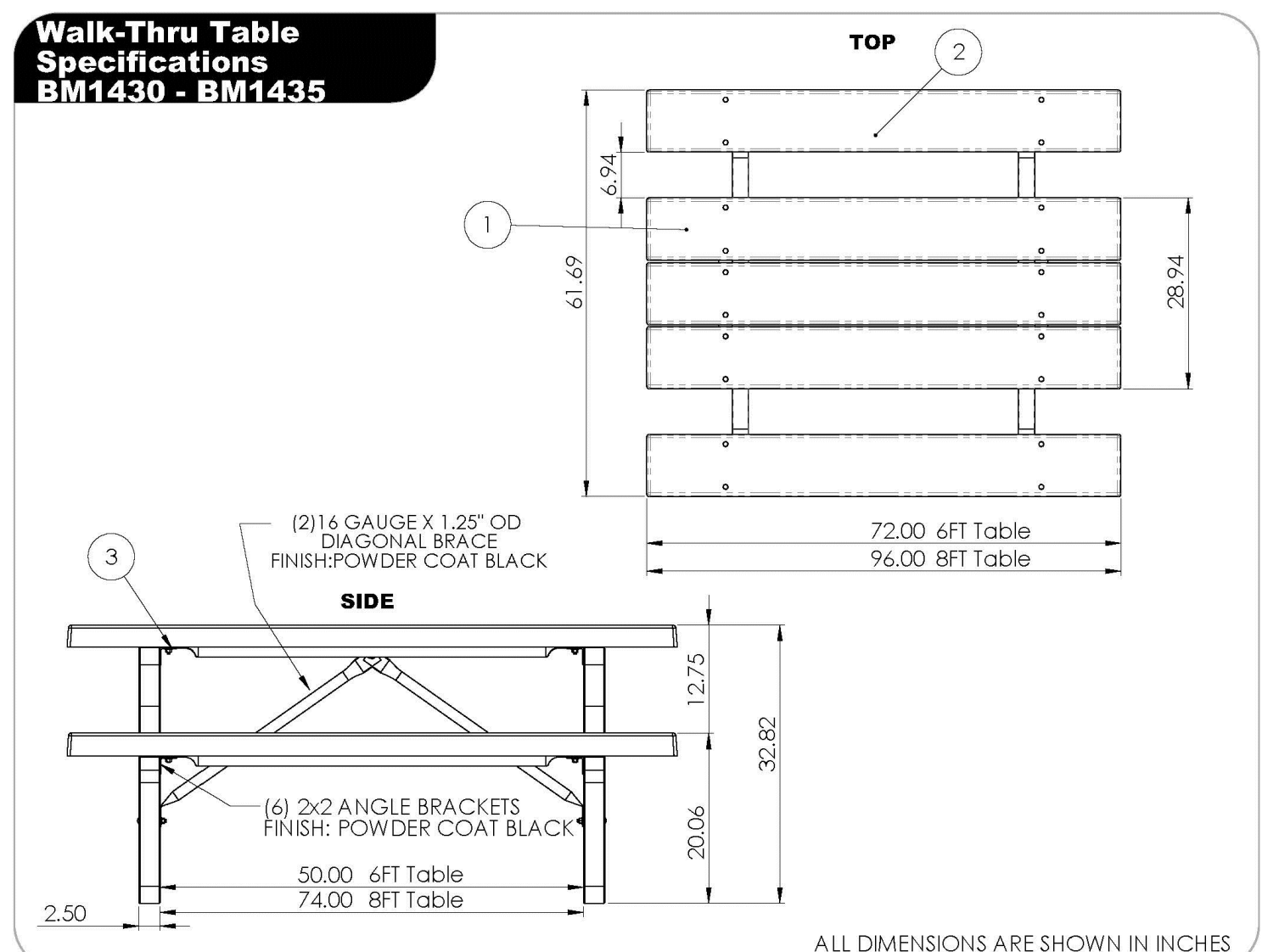
32 GALLON LINER: Made of heavy duty plastic.

Overall Dimensions including Top: 27-1/2" in diameter x 41" high x 36 gallon capacity.

- NOTES**
- TRASH RECEPTACLE BASIS OF DESIGN: 36 GALLON TRASH RECEPTACLE WITH 32 GALLON RAIN BONNET TOP BY THE PARK CATALOG (www.theparkcatalog.com).
 - TRASH RECEPTACLE IS TO BE MOUNTED TO CONCRETE PAD PER MANUFACTURER.
 - TRASH RECEPTACLE IS TO BE STEEL WITH BLACK POWDER COAT FINISH TO MATCH RECEPTACLES ON SITE.

4 TRASH RECEPTACLE
SCALE: N.T.S.

DETAIL



- NOTES**
- PICNIC TABLE BASIS OF DESIGN: BARCOBOARD WALK-THRU TABLE BY TREE TOP PRODUCTS (www.treetopproducts.com).
 - PICNIC TABLE IS TO BE 6' LENGTH (MODEL 12K5569, AND FREESTANDING).
 - PICNIC TABLE IS TO BE DESERT TAN (TOP) WITH BLACK LEGS.

5 PICNIC TABLE
SCALE: N.T.S.

DETAIL



Public Work Stand

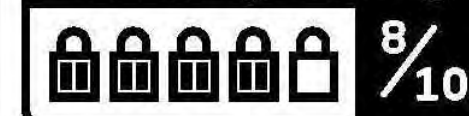
- Tool assemblies are spaced to prevent tangling
- Optimized ergonomics to work with all types of riders and bikes
- Designed for indoor or outdoor use
- Secure tool and stand fastening system
- I-beam design eliminates possibility of locking a bike to it
- ADA-compliant design

Specifications

| Construction | |
|--|-----------------------------------|
| Material | Laser-cut steel DOM tubing |
| Tool tethering | Stainless steel aircraft cable |
| Finish Options | |
| UV resistant powder coat, custom colors available | |
| Galvanized | |
| Stainless steel | |
| Installation Options | |
| Surface mount | |
| Embedment | |
| Tools Included | |
| Phillips & standard screwdrivers | |
| Steel core tire levers (2) | |
| Headset/pedal wrench | |
| 8/10 & 9/11 mm cone wrenches | |
| Torx T-25 | |
| Hex key set | |
| Dimensions | |
| Imperial | 8.5" W x 50" H x 18" D |
| Metric | 21.6 x 126 x 40.6 cm |



Security Rating

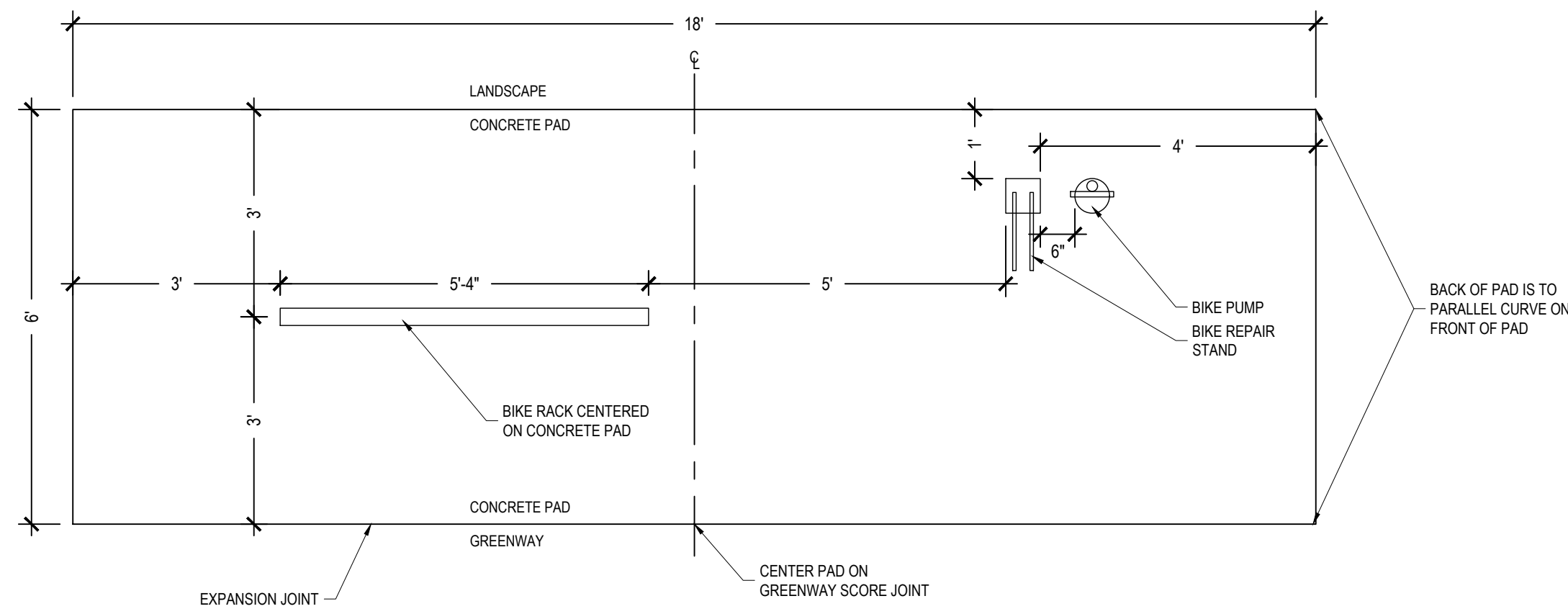


Visit www.bikefixtation.com or call 612-568-3498 (USA) for more information

- NOTES
1. BICYCLE REPAIR STAND BASIS OF DESIGN IS PUBLIC BIKE REPAIR STAND BY CYCLE SAFE, ALSO KNOWN AS PUBLIC WORK STAND BY BIKE FIXTATION (www.bikefixtation.com).
 2. BICYCLE REPAIR STAND IS TO BE EMBEDDED INTO CONCRETE PAD PER MANUFACTURER'S REQUIREMENTS.
 3. BICYCLE REPAIR STAND IS TO BE STEEL WITH GREEN POWDER COAT FINISH TO MATCH BENCHES.



- NOTES
1. BICYCLE RACK BASIS OF DESIGN IS LOOP RACK BY LANDSCAPE STRUCTURES (www.playlsi.com).
 2. BICYCLE RACK IS TO BE 2 - 3/8" O.D. SCHEDULE 40 PIPE, 5'-4" LENGTH, WITH GREEN POWDER COAT FINISH TO MATCH BENCHES.
 3. BICYCLE RACK IS TO BE MOUNTED TO CONCRETE PAD WITH 19" BURIED FOOTINGS PER MFR'S REQUIREMENTS.

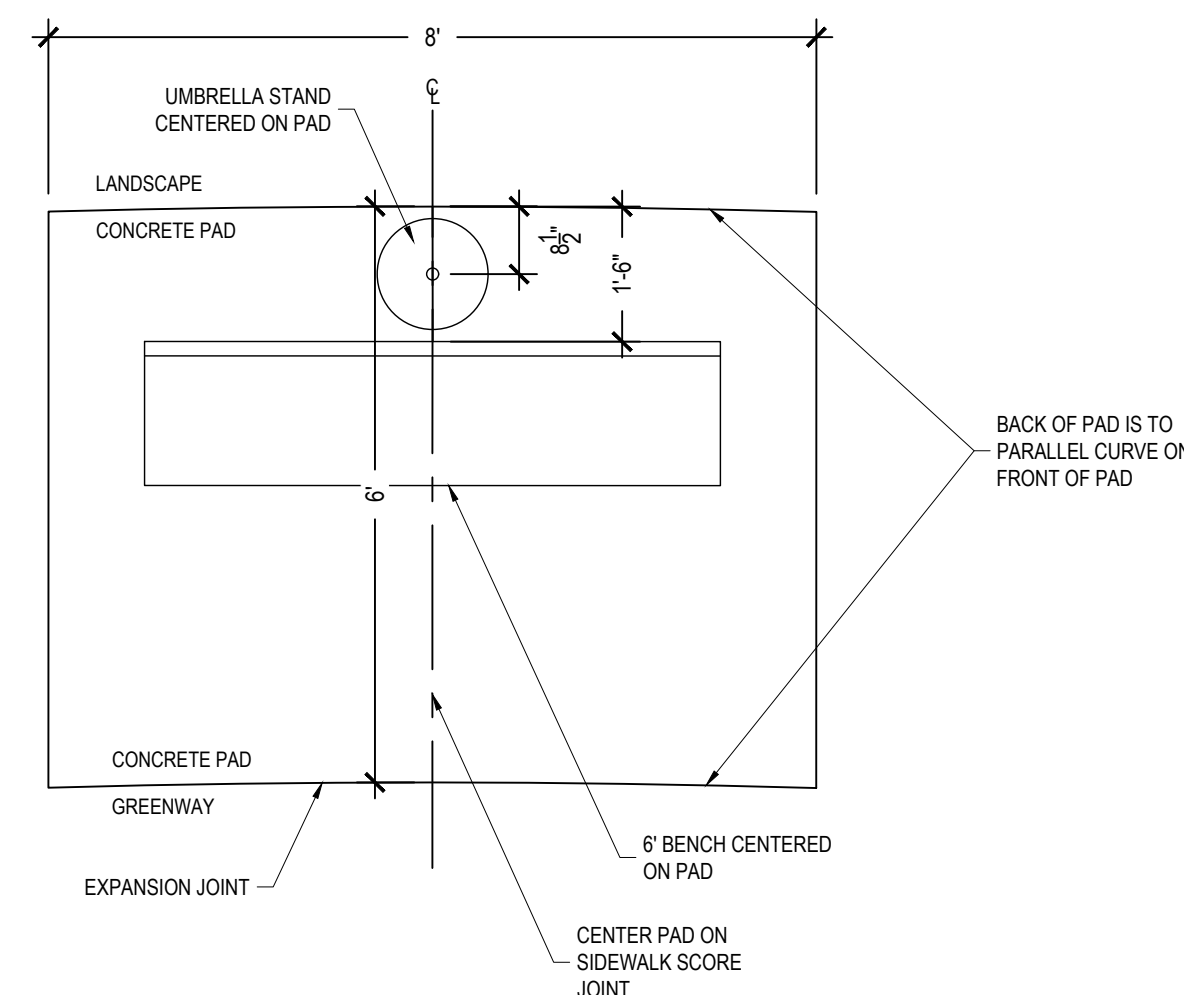


- NOTES
1. BIKE STATION CONSISTS OF A BIKE RACK, BIKE REPAIR STAND AND BIKE PUMP INSTALLED ON CONCRETE PAD AS SHOWN.
 2. DETAIL IS FOR LAYOUT ONLY. FOR PRODUCT INFORMATION AND MOUNTING INFORMATION SEE DETAILS.

1 BICYCLE REPAIR STAND
SCALE: N.T.S. DETAIL

2 BICYCLE RACK
SCALE: N.T.S. DETAIL

3 BIKE STATION LAYOUT
SCALE: 1/2" = 1'-0" DETAIL



- NOTES
1. DETAIL IS FOR LAYOUT ONLY. FOR PRODUCT INFORMATION AND MOUNTING INFORMATION SEE DETAILS.

4 BENCH PAD
SCALE: 1/2" = 1'-0"

U:\22\0540\220549\Kiwani's Children's Park Phase II CAD Drawing\048\Construction\020 SITE DETAILS.dwg Wednesday, February 21, 2024 4:51:09 PM - 1885648